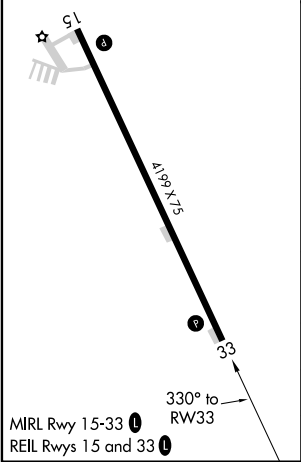
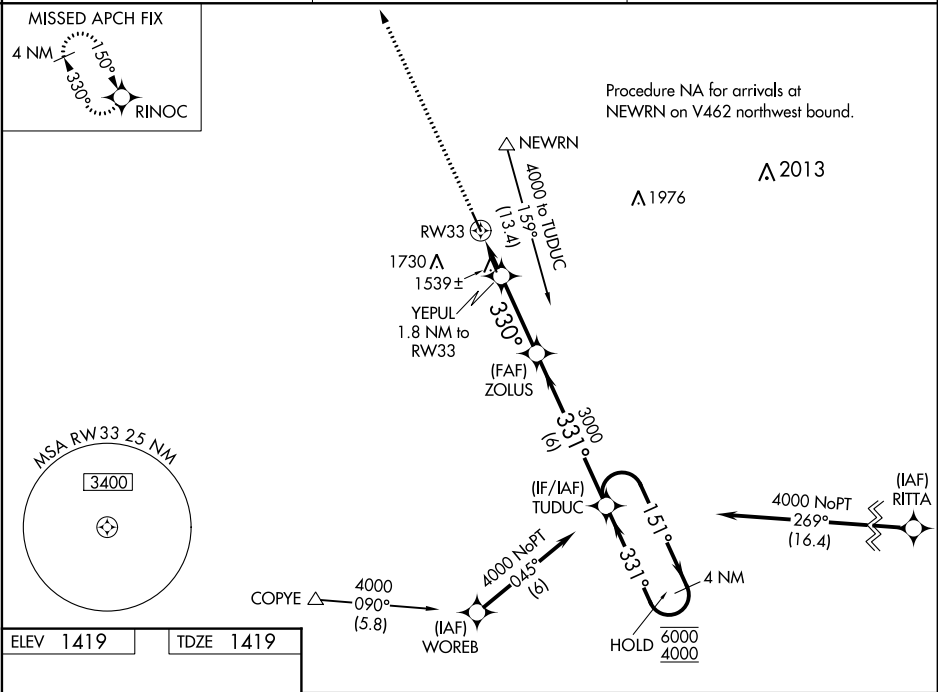


WAAS CH <b>82128</b> <b>W33A</b>	APP CRS <b>330°</b>	Rwy Idg TDZE Apt Elev	<b>4199</b> <b>1419</b> <b>1419</b>
--	------------------------	-----------------------------	---

RNAV (GPS) RWY 33  
SHELDON RGNL (SHL)

RNP APCH.	MISSED APPROACH: Climb to 4000 direct RINOC and hold.
▼ Rwy 33 helicopter visibility reduction below ¾ SM NA. For uncompensated Baro-VNAV systems, LNAV/VNAV NA below -17°C or above 54°C.	

AWOS-3 <b>119.775</b>	MINNEAPOLIS CENTER <b>125.025 235.625</b>	UNICOM <b>122.8 (CTAF) 0</b>
--------------------------	--	---------------------------------



4000 RINOC	VGSI and RNAV glidepath not coincident (VGSI Angle 3.00/TCH 40).			
*LNAV only	YEPUL 1.8 NM to RW33	ZOLUS 3000	TUDUC 4 NM Holding Pattern	
	*1.1 NM to RW33			
	2020*	330°	331°	GP 3.00° TCH 44
	1.1	0.7	3.1 NM	6 NM
CATEGORY	A	B	C	D
LPV DA	1718-1 299 (300-1)			NA
LNAV/VNAV DA	1696-1 277 (300-1)			NA
LNAV MDA	1800-1 381 (400-1)	1800-1½ 381 (400-1½)		NA
CIRCLING	1820-1 401 (500-1)	1880-1 461 (500-1)	1880-1½ 461 (500-1½)	NA

NC-3, 03 DEC 2020 to 31 DEC 2020

NC-3, 03 DEC 2020 to 31 DEC 2020