

WAAS CH 78220 W12A	APP CRS 117°	Rwy Idg TDZE Apt Elev	3449 940 940
----------------------------------------	------------------------	-----------------------------	-----------------------------------------

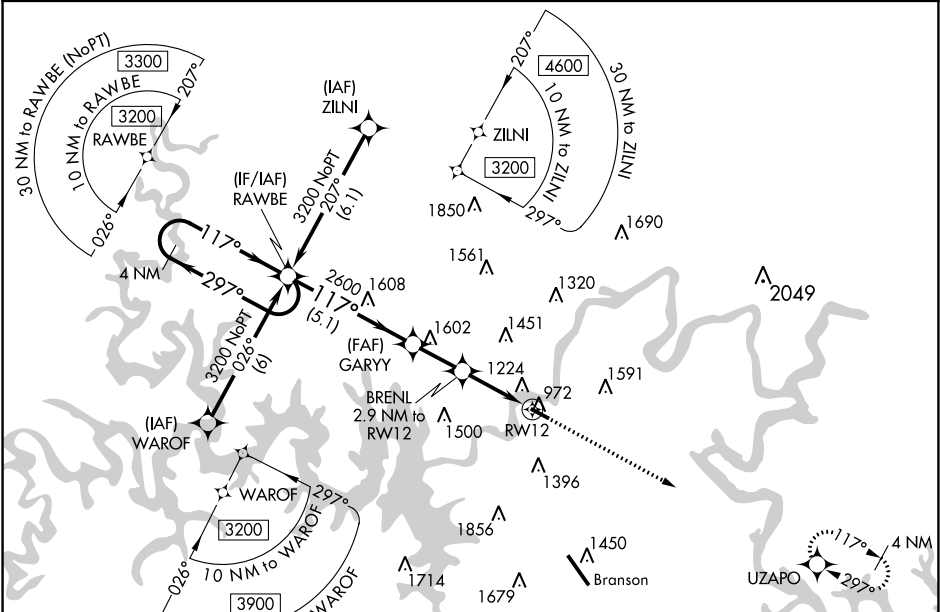
RNAV (GPS) RWY 12

M GRAHAM CLARK DOWNTOWN (PLK)

Baro-VNAV NA when using Branson altimeter setting. For uncompensated Baro-VNAV systems, LNAV/VNAV NA below -16°C (4°F) or above 54°C (130°F). DME/DME RNP-0.3 NA. VDP NA with Branson altimeter setting. Obtain local altimeter setting on CTAF; when not received, use Branson altimeter setting and increase all DA 65 feet and all MDA 80 feet; increase LPV all Cats visibility 1/8 mile and LNAV/VNAV all Cats visibility 1/4 mile.

MISSED APPROACH:
Climb to 3200 direct UZAPO and hold.

SPRINGFIELD APP CON 126.35	UNICOM 122.7 (CTAF) 0
--------------------------------------	---------------------------------



4 NM Holding Pattern RAWBE		* LNAV only		3200 UZAPO
3200 ← 297° 117° →		GARYY 2600 BRENL 2.9 NM to RW12		117° to RW12
GP 3.10° TCH 40		* 1.7 NM to RW12		3738 X 100
5.1 NM		2 NM		1.2 NM
1.7 NM		RW12		
CATEGORY	A	B	C	D
LPV DA	1140-3/4	200 (200-3/4)	NA	NA
LNAV/VNAV DA	1416-1 5/8	476 (500-1 5/8)	NA	NA
LNAV MDA	1540-1	600 (600-1)	NA	NA
CIRCLING	1560-1	620 (700-1)	NA	NA

ELEV 940

TDZE 940

REIL Rwy 12 and 30 0

MIRL Rwy 12-30 0