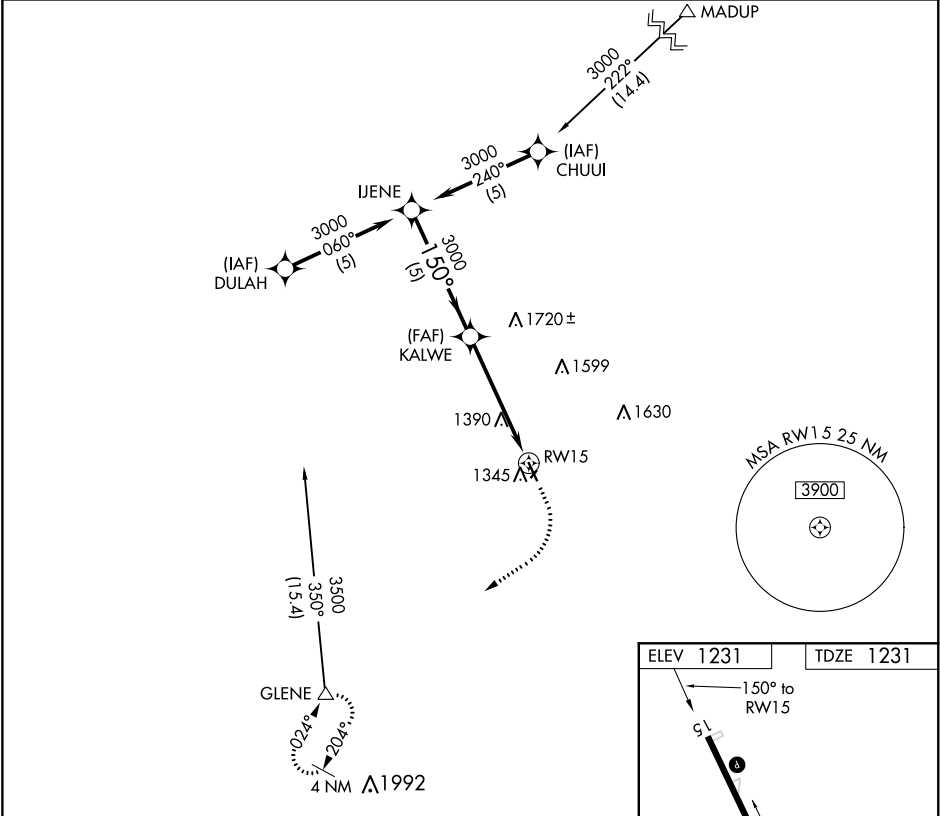


APP CRS	Rwy Idg	4100
150°	TDZE	1231
	Apt Elev	1231

GPS RWY 15
HARLAN MUNI (HNR)

 NA	Procedure NA at night. Helicopter visibility reduction below 1 SM NA. Circling NA to Rwy 3 and 21.	MISSED APPROACH: Climb to 2000, then climbing right turn to 3600 direct GLENE and hold.
--------	--	---

AWOS-3 118.325	OMAHA APP CON 124.5 263.0	UNICOM 122.8 (CTAF)
-------------------	------------------------------	------------------------



	IJENE	KALWE	2000	3600	GLENE
	3000	3000	↑	↷	△
Procedure Turn NA	150°	3.27° TCH 34	VGSI and descent angle not coincident (VGSI Angle 3.00/TCH 40).		
	5 NM		5 NM		
CATEGORY	A	B	C	D	
S-15	1780-1	549 (600-1)	NA		
CIRCLING	1780-1	549 (600-1)	NA		

