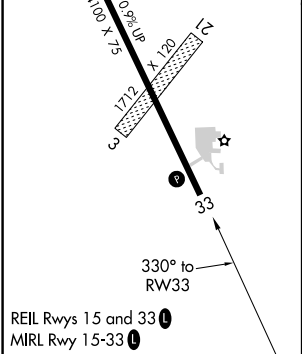
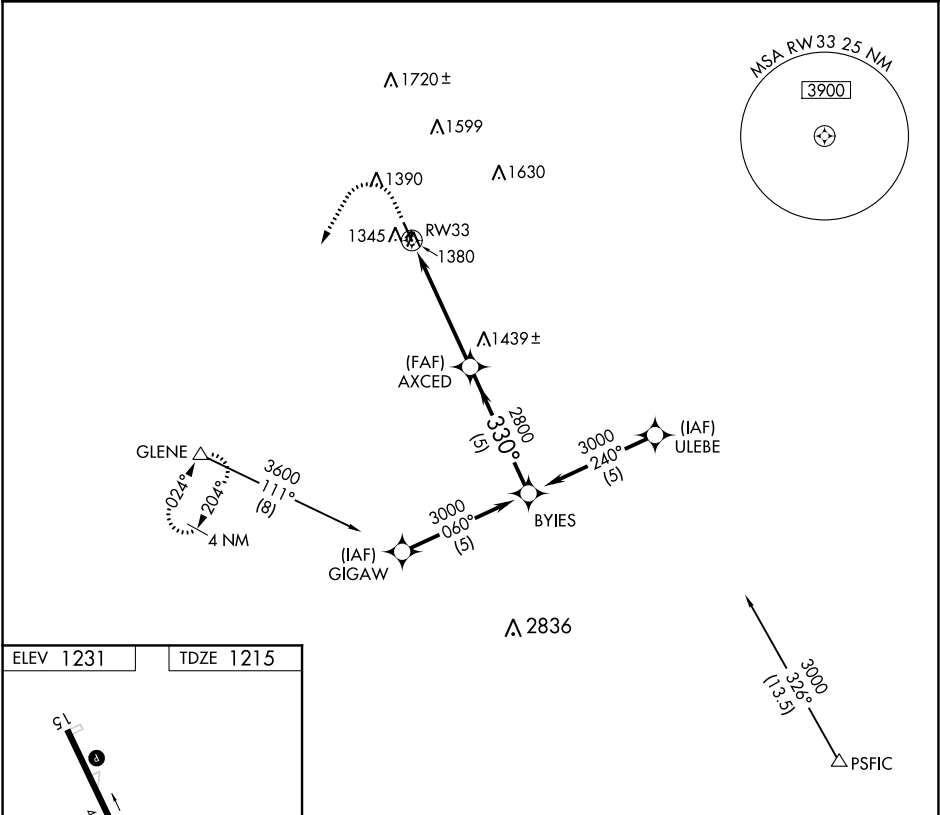





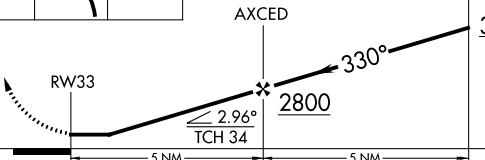
APP CRS	Rwy Idg	4100
330°	TDZE	1215
	Apt Elev	1231

GPS RWY 33
HARLAN MUNI (HNR)

<p>Procedure NA at night. Helicopter visibility reduction below 1 SM NA. Circling NA to Rwy 3 and 21.</p>	<p>MISSED APPROACH: Climb to 2000, then climbing left turn to 3600 direct GLENE and hold.</p>
---	---

AWOS-3 118.325	OMAHA APP CON 124.5 263.0	UNICOM 122.8 (CTAF) 0
-------------------	------------------------------	--------------------------



2000	3600	GLENE	VGSI and descent angles not coincident (VGSI Angle 3.00/TCH 40).	
				
				
CATEGORY	A	B	C	D
S-33	1640-1	425 (500-1)	NA	
CIRCLING	1780-1	549 (600-1)	NA	