

WAAS CH <b>82019</b> <b>W02A</b>	APP CRS <b>024°</b>	Rwy Idg <b>5000</b> TDZE <b>890</b> Apt Elev <b>892</b>
--	------------------------	---

RNAV (GPS) RWY 2

NEVADA MUNI (NVD)

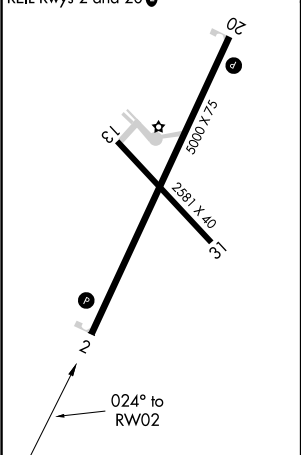
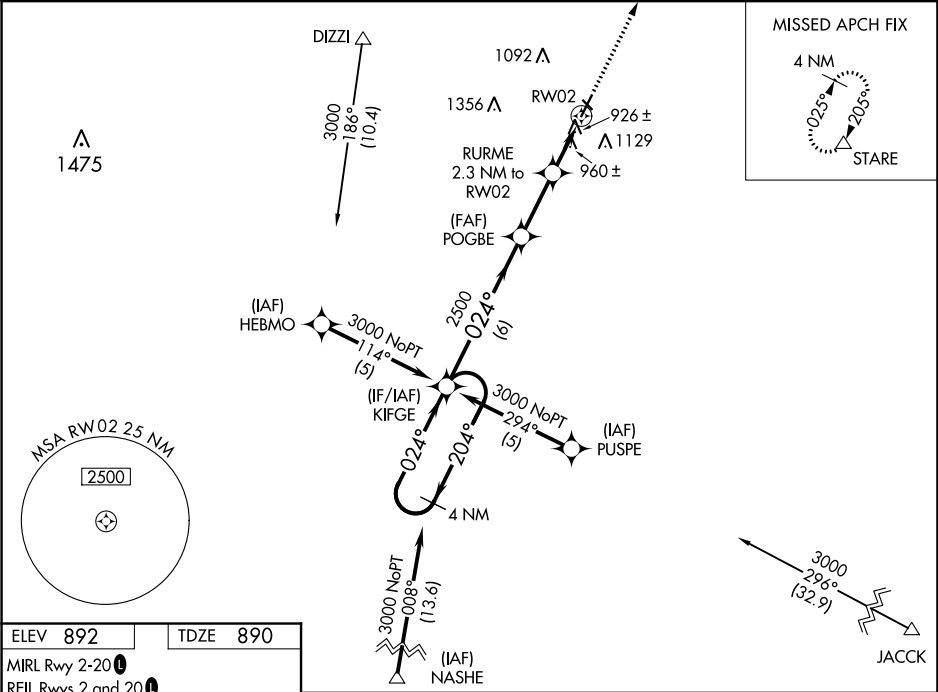
▽

△NA

DME/DME RNP-0.3 NA. Baro-VNAV and VDP NA when using Joplin Rgnl altimeter setting. For uncompensated Baro-VNAV systems, LNAV/VNAV NA below -16°C (4°F) or above 54°C (130°F). When local altimeter setting not received, use Joplin Rgnl altimeter setting and increase all DA 112 feet and all MDA 120 feet, increase LNAV/VNAV all Cats and LNAV Cat C visibility ¼ mile. Circling NA to Rwy 13-31.

MISSED APPROACH:  
Climb to 3000 direct STARE and hold.

AWOS-3 <b>119.175</b>	KANSAS CITY CENTER <b>125.55 327.0</b>	UNICOM <b>122.8 (CTAF) 0</b>
--------------------------	---	---------------------------------



VGSi and RNAV glidepath not coincident (VGSi Angle 3.00/TCH 34).				3000	STARE
4 NM Holding Pattern				↑	△
KIFGE				*LNAV only	
POGBE					
RUMRE 2.3 NM to RWY02					
*0.9 NM to RWY02					
RWY02					
GP 3.00° TCH 45					
2500					
*1660					
6 NM					
2.6 NM					
1.4 NM					
0.9 NM					
CATEGORY	A	B	C	D	
LPV DA	1090-1 200 (200-1)			NA	
LNAV/VNAV DA	1219-1¼ 329 (400-1¼)			NA	
LNAV MDA	1220-1 330 (400-1)			NA	
CIRCLING	1260-1 368 (400-1)	1440-1 548 (600-1)	1440-1½ 548 (600-1½)	NA	