


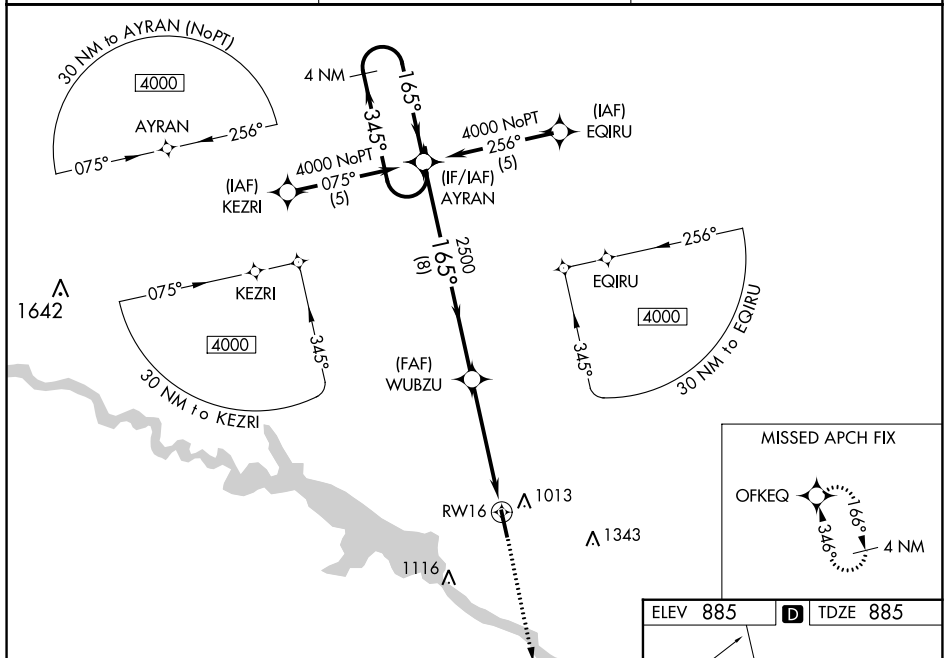
WAAS CH 77610 W16A	APP CRS 165°	Rwy Idg TDZE Apt Elev	5000 885 885
--	------------------------	-----------------------------	---

RNAV (GPS) RWY 16
PELLA MUNI (PEA)

	<p>DME/DME RNP -0.3 NA. Visibility reduction by helicopters NA. Baro-VNAV NA when using Knoxville altimeter setting. For uncompensated Baro-VNAV systems, LNAV/VNAV NA below -16°C (4°F) or above 54°C (130°F). When local altimeter setting not received, use Knoxville altimeter setting and increase all DA 29 feet and all MDA 40 feet.</p>
---	--

MISSED APPROACH: Climb to 3000 direct OFKEQ and hold.

AWOS-3 118.875	DES MOINES APP CON 123.9 307.15	UNICOM 122.8 (CTAF) 0
--------------------------	---	---------------------------------



4 NM Holding Pattern

VGS1 and RNAV glidepath not coincident (VGS1 Angle 3.30/TCH 26.1)

AYRAN

WUBZU

3000

OFKEQ

4000

← 345°

165° →

165°

2500

GP 3.00°

TCH 40

8 NM

4.9 NM

RW16

