

APP CRS	Rwy Idg	2901
170°	TDZE	1045
	Apt Elev	1045

RNAV (GPS) RWY 17

RED OAK MUNI (RDK)

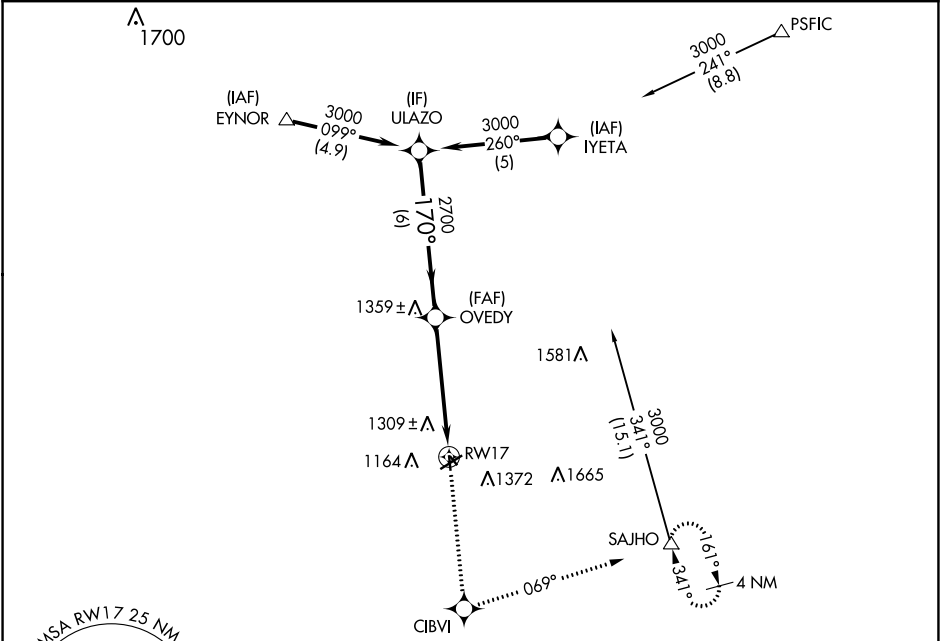
⚠

DME/DME RNP-0.3 NA. Visibility reduction by helicopters NA. When local altimeter setting not received, use Shenandoah altimeter setting and increase all MDA 60 feet, and increase Circling Cat B visibility ¼ mile.

⚠

MISSED APPROACH: Climb to 3000 direct CIBVI and left turn via track 069° to SAJHO and hold.

AWOS-3P 123.925	OMAHA APP CON 124.5 263.0	UNICOM 122.8 (CTAF) 0
--------------------	------------------------------	--------------------------



ELEV 1045

TDZE 1045

170° to RW17

2901 X 40

2050 X 210

5100 X 75

35

Procedure Turn NA

ULAZO

OVEDY

3000

170°

2700

3.04°

TCH 44

6 NM

5 NM

RW17

3000

CIBVI

tr 069°

SAJHO

CATEGORY	A	B	C	D
INAV MDA	1600-1	555 (600-1)	NA	NA
CIRCLING	1620-1 575 (600-1)	1780-1 735 (800-1)	NA	NA

MIRL Rwy 5-23 and 17-35 0

REIL Rwy 5, 17, 23, and 35 0