


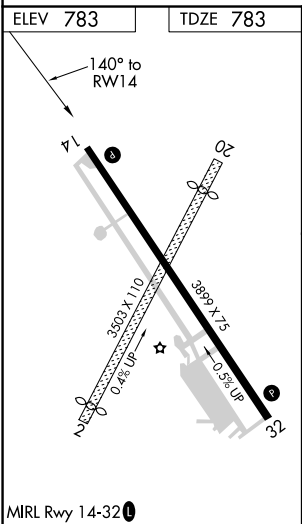
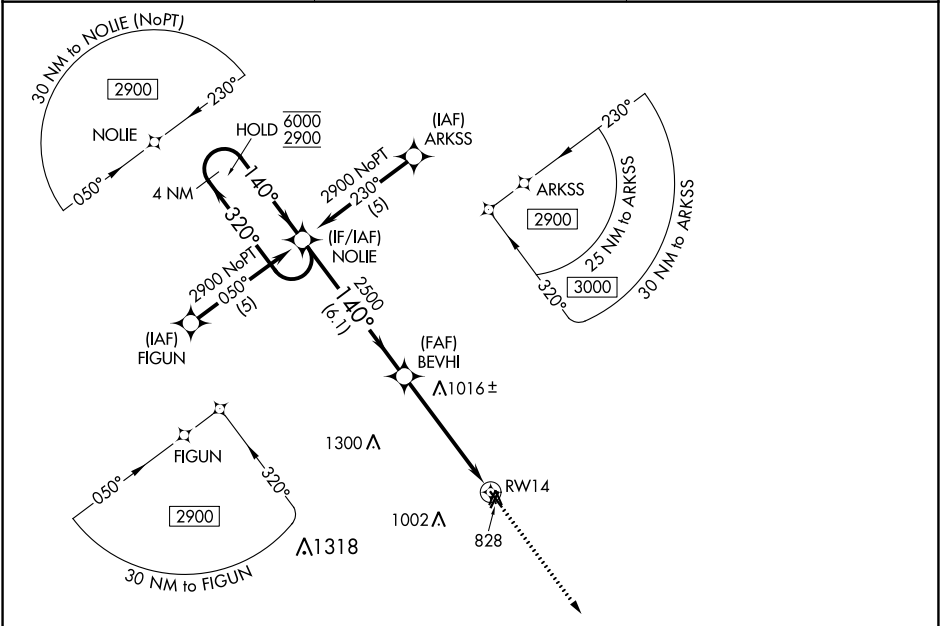


APP CRS	Rwy Idg	3899
140°	TDZE	783
	Apt Elev	783

RNAV (GPS) RWY 14

CHILLICOTHE MUNI (CHT)

RNP APCH.		MISSED APPROACH: Climb to 2900 direct TUDEE and hold.
 Rwy 14 helicopter visibility reduction below 1 SM NA.	 Procedure NA at night. When local altimeter setting not received, use Kansas City Intl altimeter setting and increase all MDA 200 feet.	
AWOS-3 118.175	KANSAS CITY CENTER 125.25 235.975	UNICOM 122.8 (CTAF) 



4 NM Holding Pattern				NOIE		2900		TUDEE	
6000		← 320°		140° →		140°		3.04°	
2900						2500		TCH 44	
						RW14			
				6.1 NM		5.2 NM			
CATEGORY		A		B		C		D	
LNAV MDA		1280-1		497 (500-1)		NA			