

WAAS CH <b>70413</b> <b>W32A</b>	APP CRS <b>320°</b>	Rwy Idg TDZE <b>782</b> Apt Elev <b>783</b>
--	------------------------	---

RNAV (GPS) RWY 32

CHILLICOTHE MUNI (CHT)

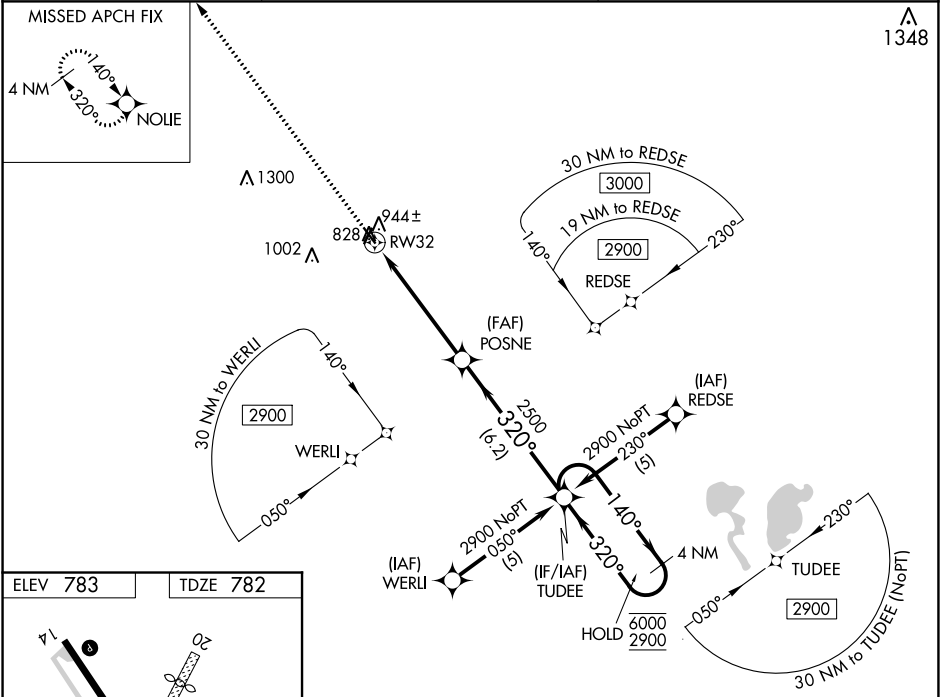
RNP APCH.

NA

Baro-VNAV and VDP NA when using Kansas City Intl altimeter setting.  
Rwy 32 helicopter visibility reduction below ¾ SM NA. For uncompensated Baro-VNAV systems, LNAV/VNAV NA below -16°C or above 54°C.  
When local altimeter setting not received, use Kansas City Intl altimeter setting and increase LPV DA to 1329 and LNAV/VNAV DA to 1335 and all MDA 200 feet, increase all LPV visibilities ¾ SM and LNAV/VNAV visibilities ½ SM.

MISSED APPROACH: Climb to 2900 direct NOLIE and hold.

AWOS-3 <b>118.175</b>	KANSAS CITY CENTER <b>125.25 235.975</b>	UNICOM <b>122.8 (CTAF) 0</b>
--------------------------	---	---------------------------------



2900

NOLIE

VGSI and RNAV glidepath not coincident (VGSI Angle 3.50/TCH 44).

\*LNAV only

\*1.1 NM to RW32

POSNE

TUDEE

4 NM Holding Pattern

140° → 6000

← 320° 2900

GP 3.00° TCH 44

1.1 NM

4.1 NM

6.2 NM

CATEGORY	A	B	C	D
LPV DA	1148-1¼	366 (400-1¼)	NA	
LNAV/VNAV DA	1154-1½	372 (400-1½)	NA	
LNAV MDA	1200-1	418 (500-1)	NA	

MIRL Rwy 14-32

NC-3, 03 DEC 2020 to 31 DEC 2020

NC-3, 03 DEC 2020 to 31 DEC 2020