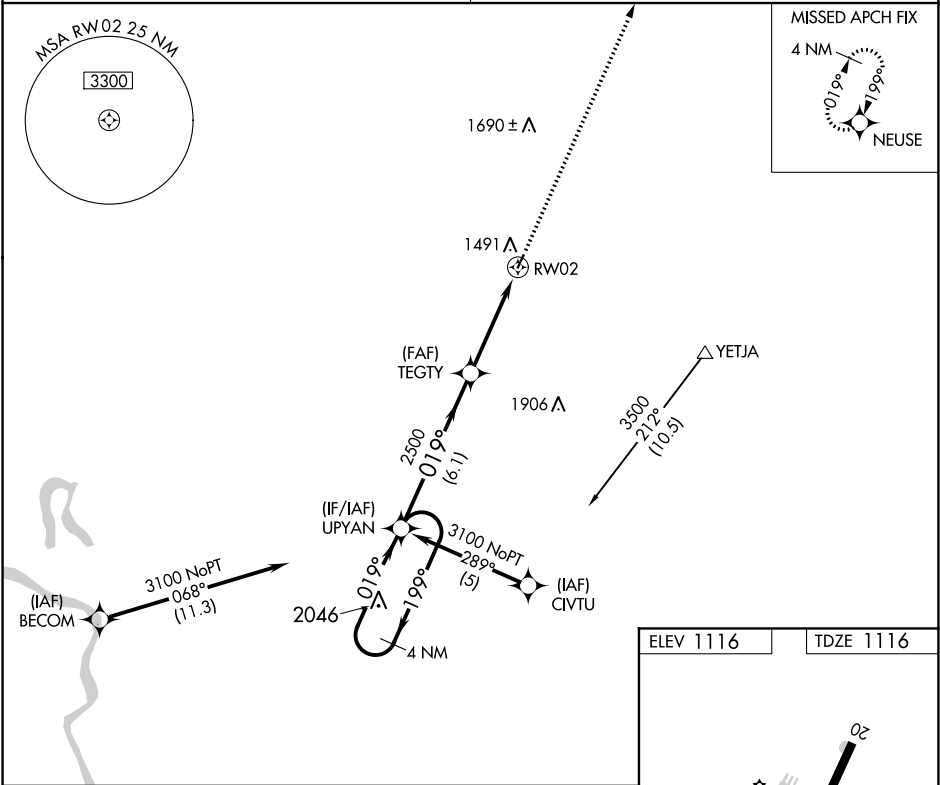


APP CRS	Rwy Idg	2801
019°	TDZE	1116
	Apt Elev	1116

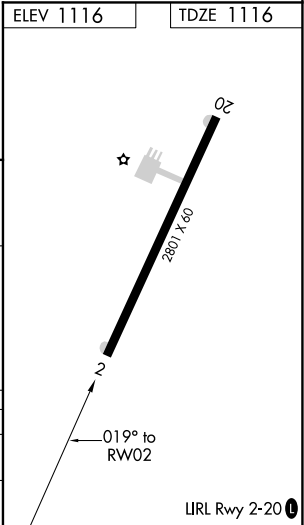
RNAV (GPS) RWY 2
JAMES G WHITING MEMORIAL FIELD (MEY)

RNP APCH.	MISSED APPROACH: Climb to 3200 direct NEUSE and hold.
▼ ▲ NA	Use Sioux City altimeter setting, when not received use Denison altimeter setting. Procedure NA at night. Rwy 2 helicopter visibility reduction below 1 SM NA.

SIoux CITY APP CON ★ 124.6 307.0	UNICOM 122.8 (CTAF) 0
-------------------------------------	--------------------------



4 NM Holding Pattern		UPYAN	3200	NEUSE
3100		TEGTY	3200	NEUSE
←199°		019°→	3.04°	TCH 40
019°		2500	3.04°	TCH 40
6.1 NM		4.2 NM		
CATEGORY	A	B	C	D
LNNAV MDA	1900-1 784 (800-1)	1900-1¼ 784 (800-1¼)	NA	
CIRCLING	1900-1 784 (800-1)	1900-1¼ 784 (800-1¼)	NA	



NC-3, 03 DEC 2020 to 31 DEC 2020

NC-3, 03 DEC 2020 to 31 DEC 2020