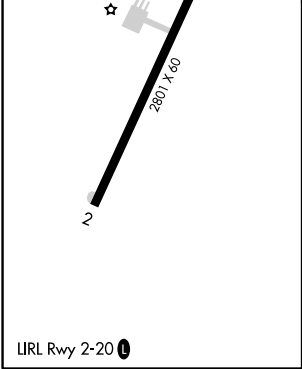
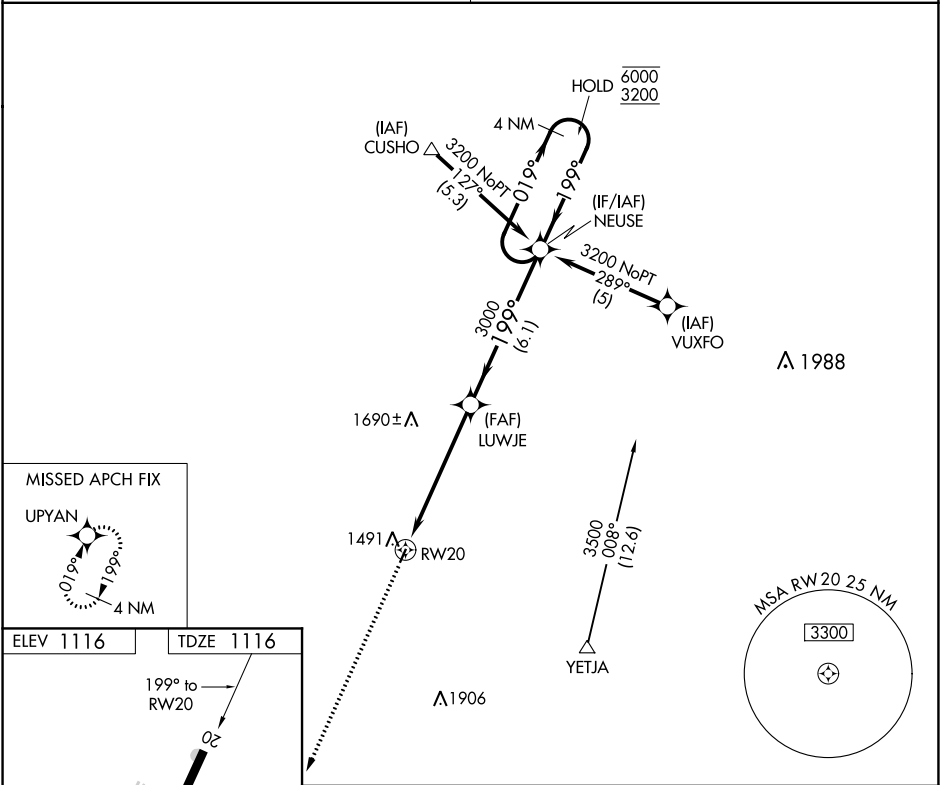


| | | |
|---------|----------|------|
| APP CRS | Rwy Idg | 2801 |
| 199° | TDZE | 1116 |
| | Apf Elev | 1116 |

RNAV (GPS) RWY 20
JAMES G WHITING MEMORIAL FIELD (MEY)

| | |
|-----------|--|
| RNP APCH. | MISSED APPROACH: Climb to 3100 direct UPYAN and hold. |
| ▼ ▲ NA | Use Sioux City altimeter setting, when not received use Denison altimeter setting. Procedure NA at night. Rwy 20 helicopter visibility reduction below 1 SM NA. |

| | |
|-------------------------------------|--------------------------|
| SIoux CITY APP CON ★ 124.6 307.0 | UNICOM 122.8 (CTAF) 0 |
|-------------------------------------|--------------------------|



3100

↑

UPYAN

✦

NEUSE

4 NM Holding Pattern

019° → 6000

← 199° 3200

LUWJE

3000

199°

3.05° TCH 40°

RW20

5.7 NM

6.1 NM

| | | | | |
|----------|-----------------------|-------------------------|----|---|
| CATEGORY | A | B | C | D |
| LNAV MDA | 1920-1 804 (900-1) | 1920-1¼ 804 (900-1¼) | NA | |
| CIRCLING | 1920-1 804 (900-1) | 1920-1¼ 804 (900-1¼) | NA | |

NC-3, 03 DEC 2020 to 31 DEC 2020

NC-3, 03 DEC 2020 to 31 DEC 2020