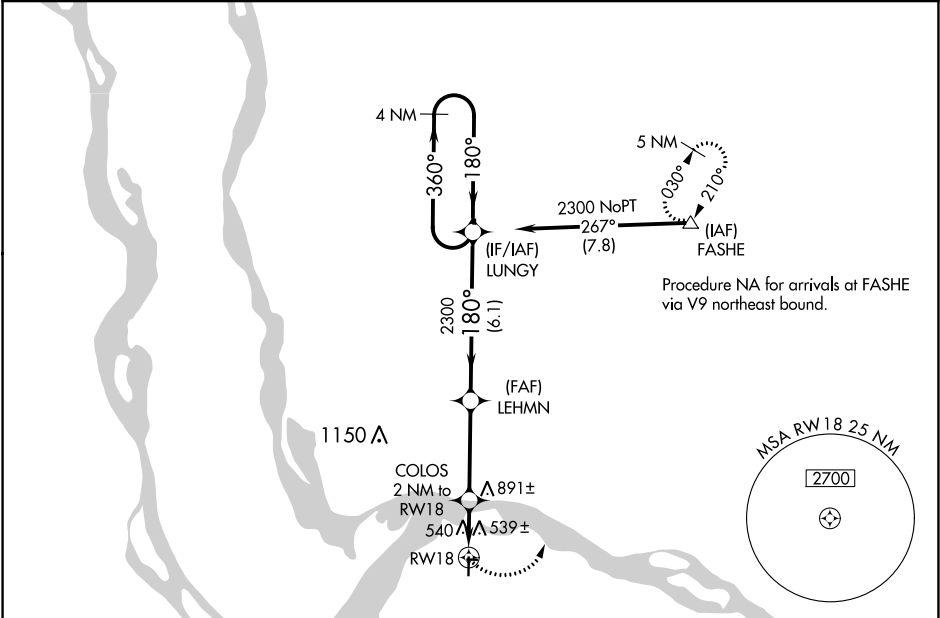


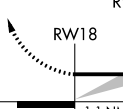
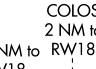
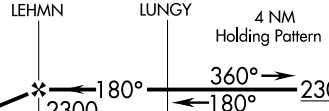


APP CRS 180°	Rwy Idg	3800
	TDZE	436
	Apt Elev	436

RNAV (GPS) RWY 18
ST CHARLES COUNTY SMARTT (S'E'T)

<p>▽ DME/DME RNP-0.3 NA. ▲ If local altimeter setting not received, use St Louis Lambert Intl altimeter setting and increase all MDAs 60 feet. VDP NA with St Louis Lambert Intl altimeter setting.</p>		MISSED APPROACH: Climbing left turn to 2700 direct FASHE and hold.	
ASOS 118.075	ST. LOUIS APP CON 124.2 353.9	CLNC DEL 121.6	UNICOM 122.7 (CTAF) 0



2700		FASHE		VGSI and descent angles not coincident (VGSI Angle 3.00/TCH 43).	
					
					
RWY 18		COLOS		LEHMN	
1.1 NM		2 NM to RWY 18		4 NM	
0.9 NM		1.1 NM to RWY 18		Holding Pattern	
1.1 NM		RWY 18		2300	
1.1 NM		1.1 NM		180°	
0.9 NM		1.1 NM		360°	
3.6 NM		1.1 NM		180°	
6.1 NM		1.1 NM		2300	
1.1 NM		1.1 NM		2300	
0.9 NM		1.1 NM		2300	
3.6 NM		1.1 NM		2300	
6.1 NM		1.1 NM		2300	
1.1 NM		1.1 NM		2300	
0.9 NM		1.1 NM		2300	
3.6 NM		1.1 NM		2300	
6.1 NM		1.1 NM		2300	
1.1 NM		1.1 NM		2300	
0.9 NM		1.1 NM		2300	
3.6 NM		1.1 NM		2300	
6.1 NM		1.1 NM		2300	
1.1 NM		1.1 NM		2300	
0.9 NM		1.1 NM		2300	
3.6 NM		1.1 NM		2300	
6.1 NM		1.1 NM		2300	
1.1 NM		1.1 NM		2300	
0.9 NM		1.1 NM		2300	
3.6 NM		1.1 NM		2300	
6.1 NM		1.1 NM		2300	
1.1 NM		1.1 NM		2300	
0.9 NM		1.1 NM		2300	
3.6 NM		1.1 NM		2300	
6.1 NM		1.1 NM		2300	
1.1 NM		1.1 NM		2300	
0.9 NM		1.1 NM		2300	
3.6 NM		1.1 NM		2300	
6.1 NM		1.1 NM		2300	
1.1 NM		1.1 NM		2300	
0.9 NM		1.1 NM		2300	
3.6 NM		1.1 NM		2300	
6.1 NM		1.1 NM		2300	
1.1 NM		1.1 NM		2300	
0.9 NM		1.1 NM		2300	
3.6 NM		1.1 NM		2300	
6.1 NM		1.1 NM		2300	
1.1 NM		1.1 NM		2300	
0.9 NM		1.1 NM		2300	
3.6 NM		1.1 NM		2300	
6.1 NM		1.1 NM		2300	
1.1 NM		1.1 NM		2300	
0.9 NM		1.1 NM		2300	
3.6 NM		1.1 NM		2300	
6.1 NM		1.1 NM		2300	
1.1 NM		1.1 NM		2300	
0.9 NM		1.1 NM		2300	
3.6 NM		1.1 NM		2300	
6.1 NM		1.1 NM		2300	
1.1 NM		1.1 NM		2300	
0.9 NM		1.1 NM		2300	
3.6 NM		1.1 NM		2300	
6.1 NM		1.1 NM		2300	
1.1 NM		1.1 NM		2300	
0.9 NM		1.1 NM		2300	
3.6 NM		1.1 NM		2300	
6.1 NM		1.1 NM		2300	
1.1 NM		1.1 NM		2300	
0.9 NM		1.1 NM		2300	
3.6 NM		1.1 NM		2300	
6.1 NM		1.1 NM		2300	
1.1 NM		1.1 NM		2300	
0.9 NM		1.1 NM		2300	
3.6 NM		1.1 NM		2300	
6.1 NM		1.1 NM		2300	
1.1 NM		1.1 NM		2300	
0.9 NM		1.1 NM		2300	
3.6 NM		1.1 NM		2300	
6.1 NM		1.1 NM		2300	
1.1 NM		1.1 NM		2300	
0.9 NM		1.1 NM		2300	
3.6 NM		1.1 NM		2300	
6.1 NM		1.1 NM		2300	
1.1 NM		1.1 NM		2300	
0.9 NM		1.1 NM		2300	
3.6 NM		1.1 NM		2300	
6.1 NM		1.1 NM		2300	
1.1 NM		1.1 NM		2300	
0.9 NM		1.1 NM		2300	
3.6 NM		1.1 NM		2300	
6.1 NM		1.1 NM		2300	
1.1 NM		1.1 NM		2300	
0.9 NM		1.1 NM		2300	
3.6 NM		1.1 NM		2300	
6.1 NM		1.1 NM		2300	
1.1 NM		1.1 NM		2300	
0.9 NM		1.1 NM		2300	
3.6 NM		1.1 NM		2300	
6.1 NM		1.1 NM		2300	
1.1 NM		1.1 NM		2300	
0.9 NM		1.1 NM		2300	
3.6 NM		1.1 NM		2300	
6.1 NM		1.1 NM		2300	
1.1 NM		1.1 NM		2300	
0.9 NM		1.1 NM		2300	
3.6 NM		1.1 NM		2300	
6.1 NM		1.1 NM		2300	
1.1 NM		1.1 NM		2300	
0.9 NM		1.1 NM		2300	
3.6 NM		1.1 NM		2300	
6.1 NM		1.1 NM		2300	
1.1 NM		1.1 NM		2300	
0.9 NM		1.1 NM		2300	
3.6 NM		1.1 NM		2300	
6.1 NM		1.1 NM		2300	
1.1 NM		1.1 NM		2300	
0.9 NM		1.1 NM		2300	
3.6 NM		1.1 NM		2300	
6.1 NM		1.1 NM		2300	
1.1 NM		1.1 NM		2300	
0.9 NM		1.1 NM		2300	
3.6 NM		1.1 NM		2300	
6.1 NM		1.1 NM		2300	
1.1 NM		1.1 NM		2300	
0.9 NM		1.1 NM		2300	
3.6 NM		1.1 NM		2300	
6.1 NM		1.1 NM		2300	
1.1 NM		1.1 NM		2300	
0.9 NM		1.1 NM		2300	
3.6 NM		1.1 NM		2300	
6.1 NM		1.1 NM		2300	
1.1 NM		1.1 NM		2300	
0.9 NM		1.1 NM		2300	
3.6 NM		1.1 NM		2300	
6.1 NM		1.1 NM		2300	
1.1 NM		1.1 NM		2300	
0.9 NM		1.1 NM		2300	
3.6 NM		1.1 NM		2300	
6.1 NM		1.1 NM		2300	
1.1 NM		1.1 NM		2300	
0.9 NM		1.1 NM		2300	
3.6 NM		1.1 NM		2300	
6.1 NM		1.1 NM		2300	
1.1 NM		1.1 NM		2300	
0.9 NM		1.1 NM		2300	
3.6 NM		1.1 NM		2300	
6.1 NM		1.1 NM		2300	
1.1 NM		1.1 NM		2300	
0.9 NM		1.1 NM		2300	
3.6 NM		1.1 NM		2300	
6.1 NM		1.1 NM		2300	
1.1 NM		1.1 NM		2300	
0.9 NM		1.1 NM		2300	
3.6 NM		1.1 NM		2300	
6.1 NM		1.1 NM		2300	
1.1 NM		1.1 NM		2300	
0.9 NM		1.1 NM		2300	
3.6 NM		1.1 NM		2300	
6.1 NM		1.1 NM		2300	
1.1 NM		1.1 NM		2300	
0.9 NM		1.1 NM		2300	
3.6 NM		1.1 NM		2300	
6.1 NM		1.1 NM		2300	
1.1 NM		1.1 NM		2300	
0.9 NM		1.1 NM		2300	
3.6 NM		1.1 NM		2300	
6.1 NM		1.1 NM		2300	
1.1 NM		1.1 NM		2300	
0.9 NM		1.1 NM		2300	
3.6 NM		1.1 NM		2300	
6.1 NM		1.1 NM		2300	
1.1 NM		1.1 NM		2300	
0.9 NM		1.1 NM		2300	
3.6 NM		1.1 NM		2300	
6.1 NM		1.1 NM		2300	
1.1 NM		1.1 NM		2300	
0.9 NM		1.1 NM		2300	
3.6 NM		1.1 NM		2300	
6.1 NM		1.1 NM		2300	
1.1 NM		1.1 NM		2300	
0.9 NM		1.1 NM		2300	
3.6 NM		1.1 NM		2300	
6.1 NM		1.1 NM		2300	
1.1 NM		1.1 NM		2300	
0.9 NM		1.1 NM		2300	
3.6 NM		1.1 NM		2300	
6.1 NM		1.1 NM		2300	
1.1 NM		1.1 NM		2300	
0.9 NM		1.1 NM		2300	
3.6 NM		1.1 NM		2300	
6.1 NM		1.1 NM		2300	
1.1 NM		1.1 NM		2300	
0.9 NM		1.1 NM		2300	
3.6 NM		1.1 NM		2300	
6.1 NM		1.1 NM		2300	
1.1 NM		1.1 NM		2300	
0.9 NM		1.1 NM		2300	
3.6 NM		1.1 NM		2300	
6.1 NM		1.1 NM		2300	
1.1 NM		1.1 NM		2300	
0.9 NM		1.1 NM		2300	
3.6 NM		1.1 NM		2300	
6.1 NM		1.1 NM		2300	
1.1 NM		1.1 NM		2300	
0.9 NM		1.1 NM		2300	
3.6 NM		1.1 NM		2300	
6.1 NM		1.1 NM		2300	
1.1 NM		1.1 NM		2300	
0.9 NM		1.1 NM		2300	
3.6 NM		1.1 NM		2300	
6.1 NM		1.1 NM		2300	
1.1 NM		1.1 NM		2300	
0.9 NM		1.1 NM		2300	
3.6 NM		1.1 NM		2300	
6.1 NM		1.1 NM		2300	
1.1 NM		1.1 NM		2300	
0.9 NM		1.1 NM		2300	
3.6 NM		1.1 NM		2300	
6.1 NM		1.1 NM		2300	
1.1 NM		1.1 NM		2300	
0.9 NM		1.1 NM		2300	
3.6 NM		1.1 NM		2300	
6.1 NM		1.1 NM		2300	
1.1 NM		1.1 NM		2300	
0.9 NM		1.1 NM		2300	
3.6 NM		1.1 NM		2300	
6.1 NM		1.1 NM		2300	
1.1 NM		1.1 NM		2300	
0.9 NM		1.1 NM		2300	
3.6 NM		1.1 NM		2300	
6.1 NM		1.1 NM		2300	
1.1 NM		1.1 NM		2300	
0.9 NM		1.1 NM		2300	
3.6 NM		1.1 NM		2300	
6.1 NM		1.1 NM		2300	
1.1 NM		1.1 NM		2300	
0.9 NM		1.1 NM		2300	
3.6 NM		1.1 NM		2300	
6.1 NM		1.1 NM		2300	
1.1 NM		1.1 NM		2300	
0.9 NM		1.1 NM		2300	
3.6 NM		1.1 NM		2300	
6.1 NM		1.1 NM		2300	
1.1 NM		1.1 NM		2300	
0.9 NM		1.1 NM		2300	
3.6 NM		1.1 NM		2300	
6.1 NM		1.1 NM		2300	
1.1 NM		1.1 NM		2300	
0.9 NM		1.1 NM		2300	
3.6 NM		1.1 NM		2300	
6.1 NM		1.1 NM		2300	
1.1 NM		1.1 NM		2300	
0.9 NM		1.1 NM		2300	
3.6 NM		1.1 NM		2300	
6.1 NM		1.1 NM		2300	
1.1 NM		1.1 NM		2300	
0.9 NM		1.1 NM		2300	
3.6 NM		1.1 NM		2300	
6.1 NM		1.1 NM		2300	
1.1 NM		1.1 NM		2300	
0.9 NM		1.1 NM		2300	
3.6 NM		1.1 NM		2300	
6.1 NM		1.1 NM		2300	
1.1 NM		1.1 NM		2300	
0.9 NM		1.1 NM		2300	
3.6 NM		1.1 NM		2300	
6.1 NM		1.1 NM		2300	
1.1 NM		1.1 NM		2300	
0.9 NM		1.1 NM		2300	
3.6 NM		1.1 NM		2300	
6.1 NM		1.1 NM		2300	
1.1 NM		1.1 NM		2300	
0.9 NM		1.1 NM		2300	
3.6 NM		1.1 NM		2300	
6.1 NM		1.1 NM		2300	
1.1 NM		1.1 NM		2300	
0.9 NM		1.1 NM		2300	
3.6 NM		1.1 NM		2300	
6.1 NM		1.1 NM		2300	
1.1 NM		1.1 NM		2300	
0.9 NM		1.1 NM		2300	
3.6 NM		1.1 NM		2300	
6.1 NM		1.1 NM		2300	
1.1 NM		1.1 NM		2300	
0.9 NM		1.1 NM		2300	
3.6 NM		1.1 NM		2300	
6.1 NM		1.1 NM		2300	
1.1 NM		1.1 NM		2300	
0.9 NM		1.1 NM		2300	
3.6 NM		1.1 NM		2300	
6.1 NM		1.1 NM		2300	
1.1 NM		1.1 NM		2300	
0.9 NM		1.1 NM		2300	
3.6 NM		1.1 NM		2300	
6.1 NM		1.1 NM		2300	
1.1 NM		1.1 NM		2300	
0.9 NM		1.1 NM		2300	
3.6 NM		1.1 NM		2300	
6.1 NM		1.1 NM		2300	
1.1 NM		1.1 NM		2300	
0.9 NM		1.1 NM		2300	
3.6 NM		1.1 NM		2300	
6.1 NM		1.1 NM		2300	
1.1 NM		1.1 NM		2300	
0.9 NM		1.1 NM			

NC-3, 03 DEC 2020 to 31 DEC 2020

NC-3, 03 DEC 2020 to 31 DEC 2020