

WAAS CH 90541 W20A	APP CRS 200°	Rwy Idg 5000 TDZE 995 Apt Elev 996
--	------------------------	---

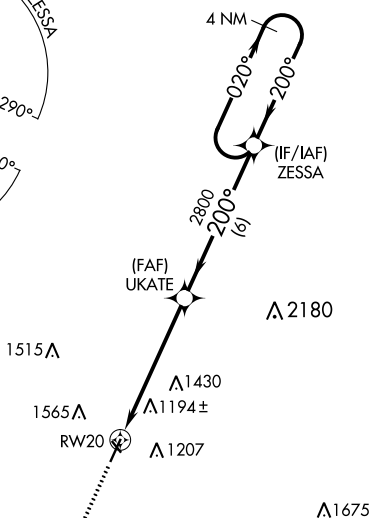
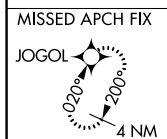
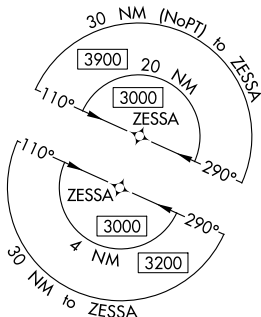
RNAV (GPS) RWY 20
SCHENCK FIELD (ICL)

RNP APCH.

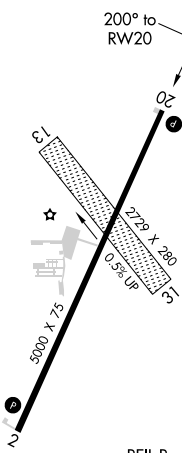
T For uncompensated Baro-VNAV systems, LNAV/VNAV NA below -16°C (4°F) or above 54°C (130°F).
A Circling NA west of Rwy 2-20. Circling NA to Rwy 13 and 31.
 Rwy 20 helicopter visibility reduction below $\frac{3}{4}$ SM NA.

MISSED APPROACH:
Climb to 3000 direct
JOGOL and hold.

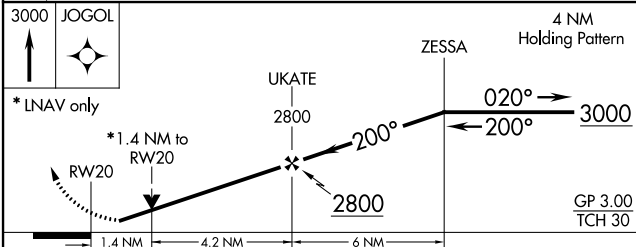
AWOS-3 132.025	MINNEAPOLIS CENTER 119.6 290.4	UNICOM 122.8 (CTAF) 0
--------------------------	--	---------------------------------



ELEV 996	TDZE 995
----------	----------



REIL Rwy 20 **L**
MIRL Rwy 2-20 **L**



CATEGORY	A	B	C	D
LPV DA	1261-1 266 (300-1)			
RNAV/ VNAV DA	1489-1 $\frac{3}{8}$ 494 (500-1 $\frac{3}{8}$)			
RNAV MDA	1460-1 465 (500-1)		1460-1 $\frac{1}{8}$ 465 (500-1 $\frac{1}{8}$)	
CIRCLING	1500-1 504 (600-1)		1780-2 $\frac{1}{4}$ 784 (800-2 $\frac{1}{4}$)	1780-2 $\frac{1}{2}$ 784 (800-2 $\frac{1}{2}$)

RNAV (GPS) RWY 20