

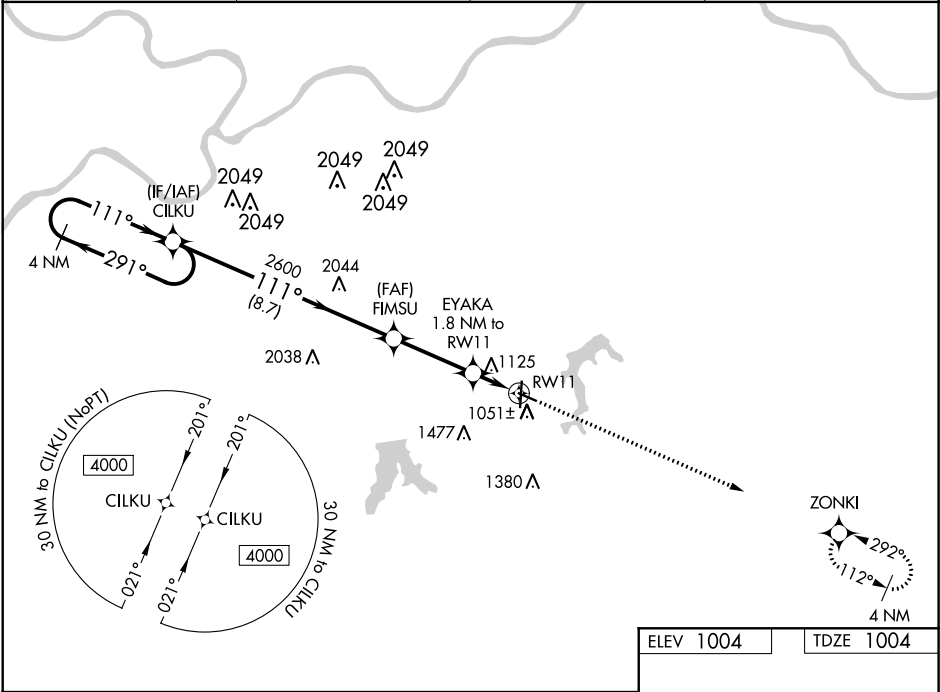
WAAS CH 99405 W11A	APP CRS 111°	Rwy Idg TDZE Apt Elev	4000 1004 1004
--	------------------------	-----------------------------	---

RNAV (GPS) RWY 11

LEE'S SUMMIT MUNI (LXT)

<div><div>▼</div><div>For uncompensated Baro-VNAV systems, LNAV/VNAV NA below -17°C (2°F) or above 54°C (130°F). Rwy 11 helicopter visibility reduction below ¾ SM NA. DME/DME RNP-0.3 NA.</div></div>	MISSED APPROACH: Climb to 3100 direct ZONKI and hold.
--	---

ASOS 124.175	KANSAS CITY APP CON 118.4 307.35	CLNC DEL 118.45	UNICOM 122.8 (CTAF) 0
------------------------	--	---------------------------	---------------------------------



4 NM Holding Pattern		CILKU	FIMSU	EYAKA	RW11
4000 ← 291°		111° →	2600	1.8 NM to RW11	
GP 3.00° TCH 45		2600	*1600	*1.1 NM to RW11	
		8.7 NM	3.1 NM	0.7 NM	1.1 NM
CATEGORY	A	B	C	D	
LPV DA		1254-7/8	250 (300-7/8)		
LNAV/VNAV DA		1381-1¼	377 (400-1¼)		
LNAV MDA		1380-1	376 (400-1)		
CIRCLING	1440-1 436 (500-1)	1540-1 536 (600-1)	1780-2¼ 776 (800-2¼)	1780-2½ 776 (800-2½)	

