

WAAS CH 82204 W18A	APP CRS 181°	Rwy Idg TDZE 999 Apt Elev 1004
--	------------------------	--

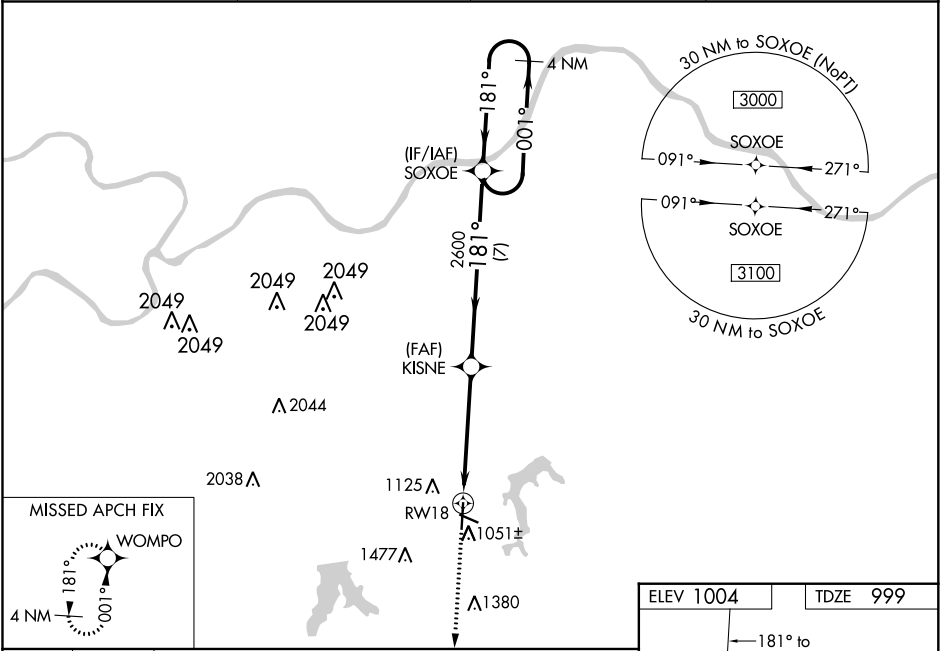
RNAV (GPS) RWY 18

LEE'S SUMMIT MUNI (LXT)

⚠ For uncompensated Baro-VNAV systems, LNAV/VNAV NA below -17°C (2°F) or above 54°C (130°F).
⚠ Rwy 18 helicopter visibility reduction below ¾ SM NA. DME/DME RNP-0.3 NA. Baro-VNAV and VDP NA when using Charles B. Wheeler Downtown altimeter setting. When local altimeter setting not received, use Charles B. Wheeler Downtown altimeter setting: increase LPV DA to 1317 feet and all visibilities ¼ SM; increase LNAV/VNAV DA to 1434 feet and all visibilities ¼ SM; increase all MDA 80 feet and LNAV visibility Cat C and D ¾ SM, Circling Cats C and D ¼ SM.

MISSED APPROACH:
Climb to 3000 direct
WOMPO and hold.

ASOS 124.175	KANSAS CITY APP CON 118.4 307.35	CLNC DEL 118.45	UNICOM 122.8 (CTAF) 0
------------------------	--	---------------------------	--



3000 WOMPO		KISNE		SOXOE	
*LNAV only		*1 NM to RWY 18		4 NM Holding Pattern	
RWY 18		2600		001° → 3000	
1 NM		3.9 NM		GP 3.00°	
7 NM				TCH 44	
CATEGORY	A	B	C	D	
LPV DA	1249-¾		250 (300-¾)		
LNAV/VNAV DA	1366-1		367 (400-1)		
LNAV MDA	1360-1		361 (400-1)		
CIRCLING	1440-1 436 (500-1)	1540-1 536 (600-1)	1780-2¼ 776 (800-2¼)	1780-2½ 776 (800-2½)	

ELEV 1004 TDZE 999

REIL Rwy 11, 18, 29 and 36 **0**
MIRL Rwy 11-29 and 18-36 **0**

NC-3, 03 DEC 2020 to 31 DEC 2020

NC-3, 03 DEC 2020 to 31 DEC 2020