

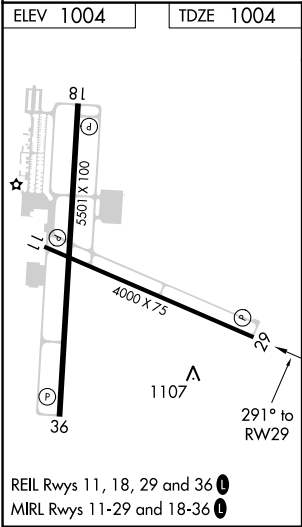
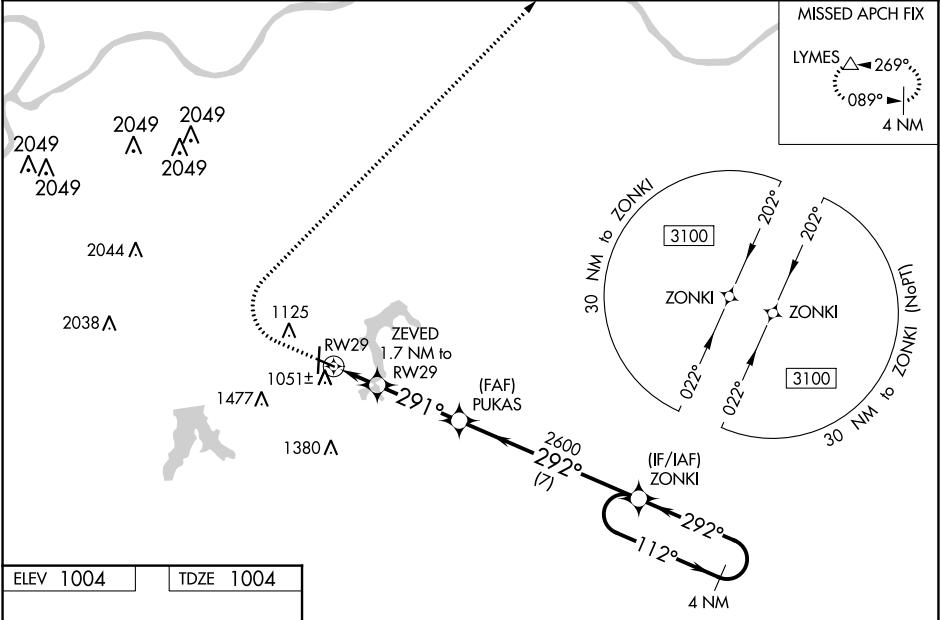
WAAS CH 48905 W29A	APP CRS 291°	Rwy Idg TDZE 1004 Apt Elev 1004
----------------------------------------	------------------------	-----------------------------------------------------

RNAV (GPS) RWY 29
LEE'S SUMMIT MUNI (LXT)

⚠ For uncompensated Baro-VNAV systems, LNAV/VNAV NA below -17°C (2°F) or above 54°C (130°F). DME/DME RNP-0.3 NA. VDP and Baro-VNAV NA when using Charles B. Wheeler Downtown altimeter setting. When local altimeter setting not received, use Charles B. Wheeler Downtown altimeter setting: increase LPV DA to 1322 feet and all visibilities 1/8 SM; increase LNAV/VNAV DA to 1359 feet and all visibilities 1/8 SM; increase all MDA 80 feet and visibility Cats C and D 1/4 SM.

MISSED APPROACH: Climb to 1500 then climbing right turn to 3000 direct LYMES and hold.

ASOS 124.175	KANSAS CITY APP CON 118.4 307.35	CLNC DEL 118.45	UNICOM 122.8 (CTAF) 0
------------------------	--------------------------------------------	---------------------------	---------------------------------



1500	3000	LYMES		
↑	↻	△		
* LNAV only				
* 1 NM to RWY 29				
* 1 NM to RWY 29				
1580*				
-1 NM - 0.7 NM - 3.2 NM - 7 NM				
CATEGORY	A	B	C	D
LPV DA	1254-3/4 250 (300-3/4)			
LNAV/VNAV DA	1291-7/8 287 (300-7/8)			
LNAV MDA	1360-1 356 (400-1)			
CIRCLING	1440-1 436 (500-1)	1540-1 536 (600-1)	1780-2 1/4 776 (800-2 1/4)	1780-2 1/2 776 (800-2 1/2)