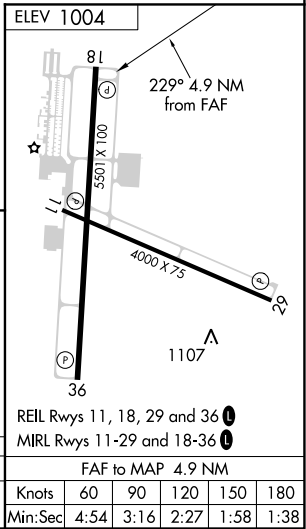
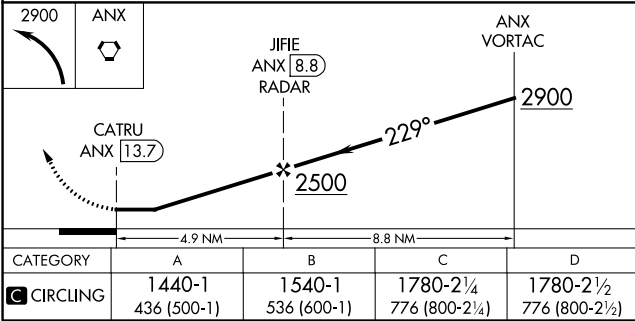
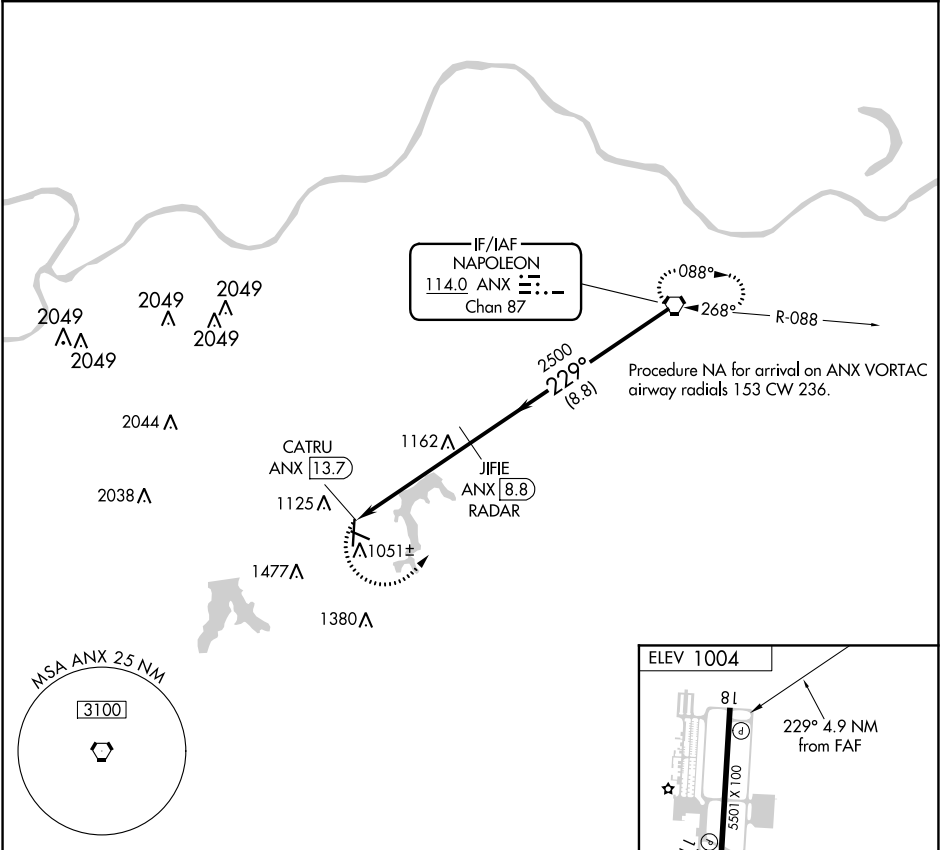


VORTAC ANX <b>114.0</b> Chan <b>87</b>	APP CRS <b>229°</b>	Rwy Idg TDZE Apt Elev <b>1004</b>	<b>N/A</b> <b>N/A</b>
--	------------------------	---	--------------------------

VOR-A  
LEE'S SUMMIT MUNI (LXT)

<p><b>⚠</b> DME or RADAR required. When local altimeter setting not received, use Charles B. Wheeler Downtown altimeter setting and increase all MDA 80 feet, and Cat C and D visibility ¼ mile.</p>	<p>MISSED APPROACH: Climbing left turn to 2900 direct ANX VORTAC and hold.</p>
--	--

ASOS <b>124.175</b>	KANSAS CITY APP CON <b>118.4 307.35</b>	CLNC DEL <b>118.45</b>	UNICOM <b>122.8</b> (CTAF) <b>0</b>
------------------------	--	---------------------------	--



LEE'S SUMMIT, MISSOURI Amdt 1 01FEB18	38°58'N-94°22'W	LEE'S SUMMIT MUNI (LXT) VOR-A
--	-----------------	----------------------------------