

WAAS
CH **70723**
W30A

APP CRS
300°

Rwy Idg **4100**
TDZE **1222**
Apt Elev **1226**

RNAV (GPS) RWY 30

POCAHONTAS MUNI (POH)

RNP APCH.

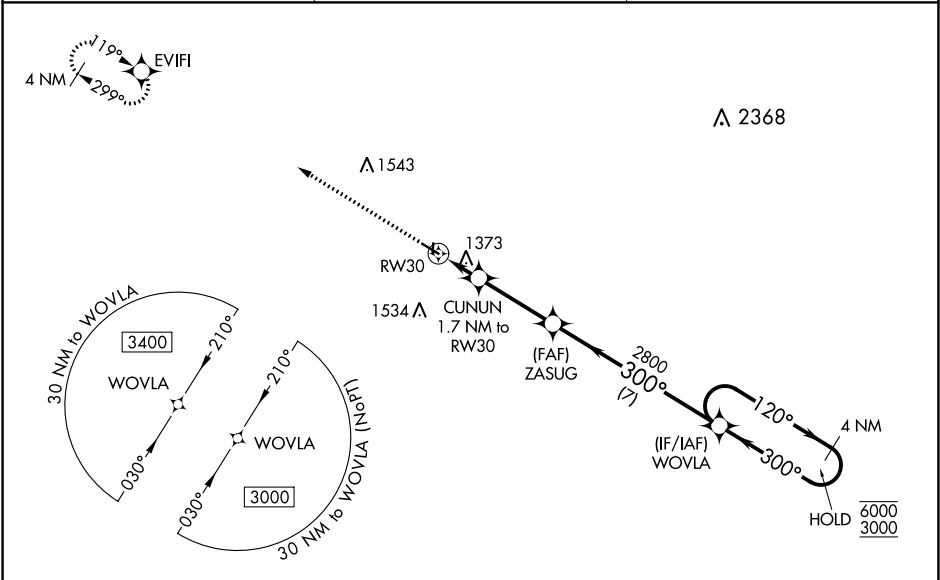
NA

NA

Circling NA to Rws 18 and 36. Circling Rwy 12 NA at night. Rwy 30 helicopter visibility reduction below ¾ SM NA. Use Algona altimeter setting; when not received, use Fort Dodge altimeter setting: increase LPV all Cats DA to 1536 feet, LNAV/VNAV all Cats DA to 1784 feet; increase all MDA 20 feet and LNAV Cat C visibility ½ SM. Baro-VNAV NA.

MISSED APPROACH: Climb to 3000 direct EVIFI and hold.

AXA AWOS-3 118.475	MINNEAPOLIS CENTER 134.0 288.3	UNICOM 122.8 (CTAF) 0
------------------------------	--	---------------------------------



ELEV 1226

TDZE 1222

12

36

81

4100 X 60

1999 X 135

0.3% UP

300° to RW30

REIL Rws 12 and 30 0

MIRL Rwy 12-30 0

3000

EVIFI

VGSI and RNAV glidepath not coincident (VGSI Angle 3.00/TCH 40).

WOVLA

4 NM Holding Pattern

120°

300°

6000

3000

GP 3.00°

TCH 45

*LNAV only

CUNUN 1.7 NM to RW30

ZASUG 2800

WOVLA

4 NM Holding Pattern

120°

300°

6000

3000

GP 3.00°

TCH 45

CATEGORY	A	B	C	D
LPV DA	1534-1	312 (400-1)		NA
LNAV/VNAV DA	1782-1½	560 (600-1½)		NA
LNAV MDA	1740-1	518 (600-1)	1740-1¾ 518 (600-1¾)	NA
CIRCLING	1800-1 574 (600-1)	1940-1 714 (800-1)	1940-2 714 (800-2)	NA