

WAAS CH 65637 W18A	APP CRS 181°	Rwy Idg TDZE Apt Elev	5000 810 823
--	------------------------	-----------------------------	---

RNAV (GPS) RWY 18

CLINTON RGNL (GLY)

RNP APCH.

▼

▲

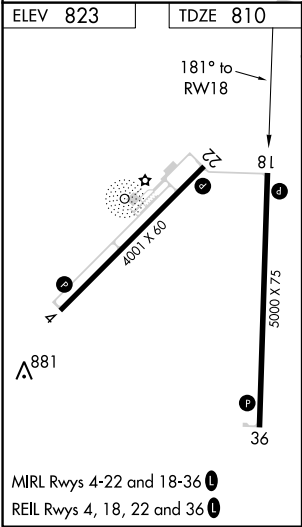
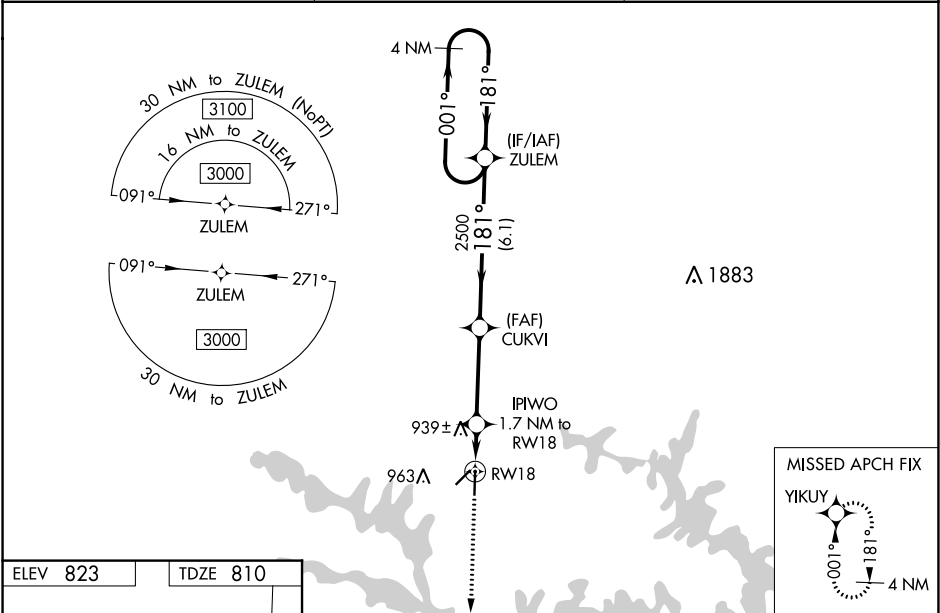
Baro-VNAV NA when using Whiteman AFB altimeter setting. For uncompensated Baro-VNAV systems, LNAV/VNAV NA below -16°C or above 54°C. Circling Rwy 4 NA at night. When local altimeter setting not received, use Whiteman AFB altimeter setting and increase all DA 61 feet and all MDA 80 feet, visibility LNAV Cat C/D ¾ mile, Circling Cat D ¼ mile. Rwy 18 helicopter visibility reduction below ¾ SM NA. VDP NA when using Whiteman AFB altimeter setting.

MISSED APPROACH: Climb to 3000 direct YIKUY and hold.

AWOS-3
120.475

WHITEMAN APP CON ★
127.45

UNICOM
122.8 (CTAF) **0**



3000

YIKUY

VGSI and RNAV glidepath not coincident (VGSI Angle 3.00/TCH 39).

*LNAV only.	IPIWO 1.7 NM to RW18	CUKVI 2500	ZULEM 4 NM Holding Pattern	001° → 3000	GP 3.00° TCH 45
	1.1 NM to RW18	1380*	181°	← 181°	
	1.1 NM	0.6	3.5 NM	6.1 NM	
CATEGORY	A	B	C	D	
LPV DA		1060-1	250 (300-1)		
LNAV/VNAV DA		1060-1	250 (300-1)		
LNAV MDA		1200-1	390 (400-1)		
CIRCLING	1280-1 457 (500-1)	1300-1 477 (500-1)	1340-1½ 517 (600-1½)	1480-2 657 (700-2)	