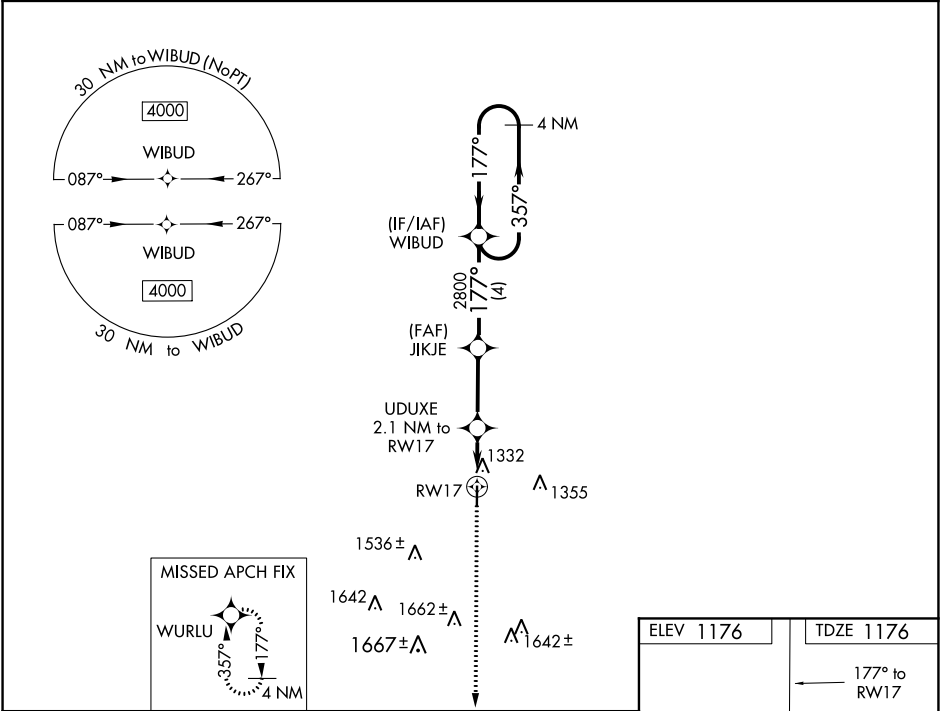


WAAS CH <b>58133</b> <b>W17A</b>	APP CRS <b>177°</b>	Rwy Idg TDZE Apt Elev	<b>4020</b> <b>1176</b> <b>1176</b>
--	------------------------	-----------------------------	---

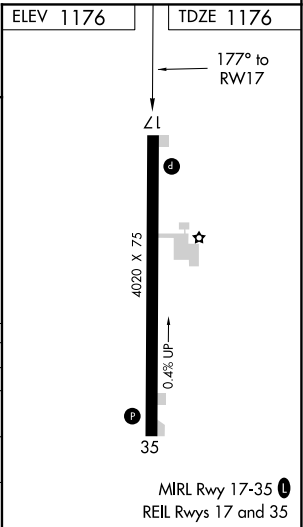
RNAV (GPS) RWY 17  
HAMPTON MUNI (HPT')

<p><b>▽</b> VDP and Baro-VNAV NA when using Mason City altimeter setting. For uncompensated Baro-VNAV systems, LNAV/VNAV NA below -17°C (2°F) or above 54°C (130°F). <b>Δ</b> NA DME/DME RNP: 0.3 NA. Helicopter visibility reduction below ¼ SM NA. When local altimeter setting not received, use Mason City altimeter setting and increase all DA 67 feet and all MDA 80 feet, and LNAV/VNAV all Cats visibility ¼ mile.</p>	<p><b>MISSED APPROACH:</b> Climb to 4000 direct WURLU and hold, continue climb-in-hold to 4000.</p>
---	---

AWOS-3 <b>121.025</b>	MINNEAPOLIS CENTER <b>134.0 288.3</b>	UNICOM <b>122.7 (CTAF) 0</b>
--------------------------	--	---------------------------------



4000	WURLU	VGSI and RNAV glidepath not coincident (VGSI Angle 3.00/TCH 22).				4 NM Holding Pattern
* LNAV only.		UDUXE 2.1 NM to RW17	JIKJE 2800	WIBUD	357° → 4000	
		* 1.2 NM to RW17	1880*	2800	← 177°	GP 3.00° TCH 40
		1.2 NM	0.9	2.9 NM	4 NM	
CATEGORY	A	B	C	D		
LPV DA	1426-1	250 (300-1)	NA			
LNAV/VNAV DA	1605-1½	429 (500-1½)	NA			
LNAV MDA	1600-1	424 (500-1)	NA			
<b>C</b> CIRCLING	1640-1	464 (500-1)	NA			



NC-3, 03 DEC 2020 to 31 DEC 2020

NC-3, 03 DEC 2020 to 31 DEC 2020