

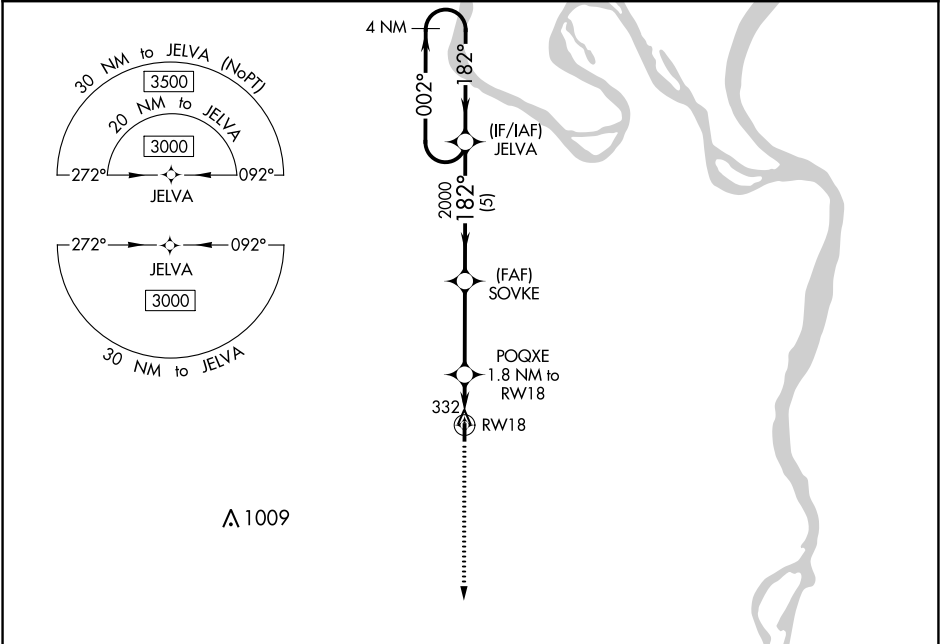
APP CRS	Rwy Idg	3196
182°	TDZE	313
	Apt Elev	313

RNAV (GPS) RWY 18

MISSISSIPPI COUNTY (CHQ)

<div><div>NA</div><div>DME/DME RNP -0.3 NA. Procedure NA at night. Use Sikeston altimeter setting, if not received use Cairo altimeter setting and increase all MDA 20 feet. Helicopter visibility reduction below 1 SM NA.</div></div>	<div>MISSED APPROACH: Climb to 3000 direct CEDKA and hold.</div>
---	--

<div>SIK AWOS-3</div> <div>119.175</div>	<div>MEMPHIS CENTER</div> <div>133.65 292.15</div>	<div>CTAF</div> <div>122.9</div>
---	---	---



<div>ELEV 313</div>		<div>TDZE 313</div>	
<div>182° to RW18</div>		<div>81</div>	
<div>3196 x 60</div>		<div>36</div>	
<div>3000</div>		<div>CEDKA</div>	
<div>VGSI and RNAV glidepath not coincident (VGSI Angle 3.00/TCH 40).</div>		<div>JELVA</div>	
<div>SOVKE</div>		<div>4 NM Holding Pattern</div>	
<div>POQXE 1.8 NM to RW18</div>		<div>002° → 3000</div>	
<div>RW18</div>		<div>← 182°</div>	
<div>1.8 NM</div>		<div>3.4 NM</div>	
<div>5 NM</div>		<div>2000</div>	
<div>920</div>		<div>182°</div>	
<div>3.00° TCH 45</div>		<div>4 NM</div>	
<div>CATEGORY</div>		<div>A</div>	
<div>LNAB MDA</div>		<div>800-1 487 (500-1)</div>	
<div>CIRCLING</div>		<div>800-1 487 (500-1)</div>	
<div></div>		<div>860-1 547 (600-1)</div>	
<div></div>		<div>NA</div>	

NC-3, 03 DEC 2020 to 31 DEC 2020

NC-3, 03 DEC 2020 to 31 DEC 2020

MIRL Rwy 18-36
REIL Rwy 18 and 36