

WAAS CH <b>69633</b> <b>W15A</b>	APP CRS <b>155°</b>	Rwy Idg <b>3304</b> TDZE <b>769</b> Apt Elev <b>769</b>
--	------------------------	---

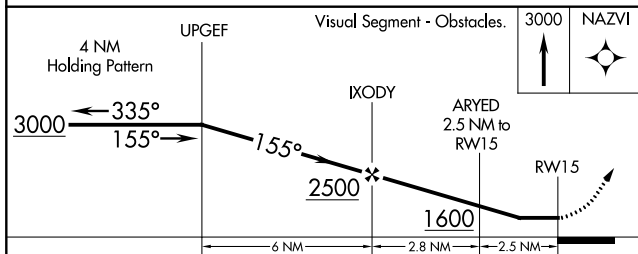
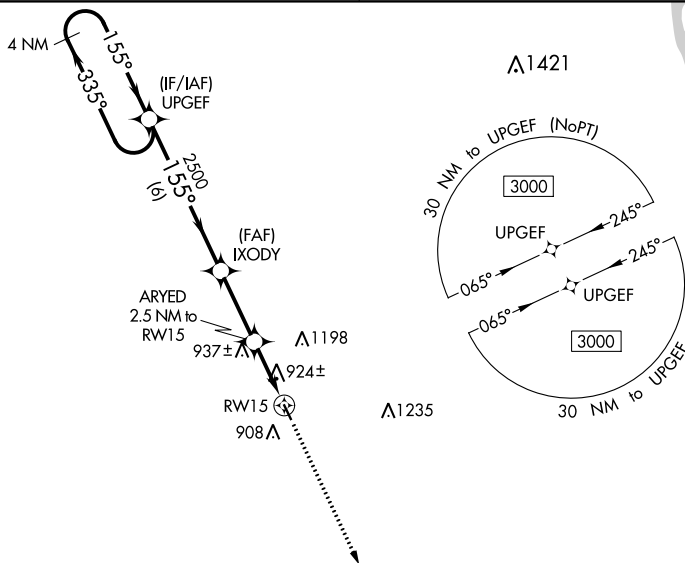
RNAV (GPS) RWY 15  
MAQUOKETA MUNI (OQW)

**T** DME/DME RNP-0.3 NA. Helicopter visibility reduction below 1 SM NA.  
**A** NA Night landing: Rwy 15 NA. Obtain local altimeter on CTAF; when not received, use Dubuque altimeter setting and increase all MDA 100 feet.

MISSED APPROACH: Climb to 3000  
direct NAZVI and hold.

CHICAGO CENTER  
133.95 281.4

UNICOM  
122.725 (CTAF) **L**



CATEGORY	A	B	C	D
LP MDA	1180-1	411 (500-1)	NA	
LNAV MDA	1200-1	431 (500-1)	NA	
<b>C</b> CIRCLING	1240-1 471 (500-1)	1400-1 631 (700-1)	NA	

