

WAAS  
CH **63138**  
**W13A**

APP CRS  
**136°**

Rwy ldg **3401**  
TDZE **754**  
Apt Elev **754**

RNAV (GPS) RWY 13

WASHINGTON MUNI (AWG)

RNP APCH.

▼

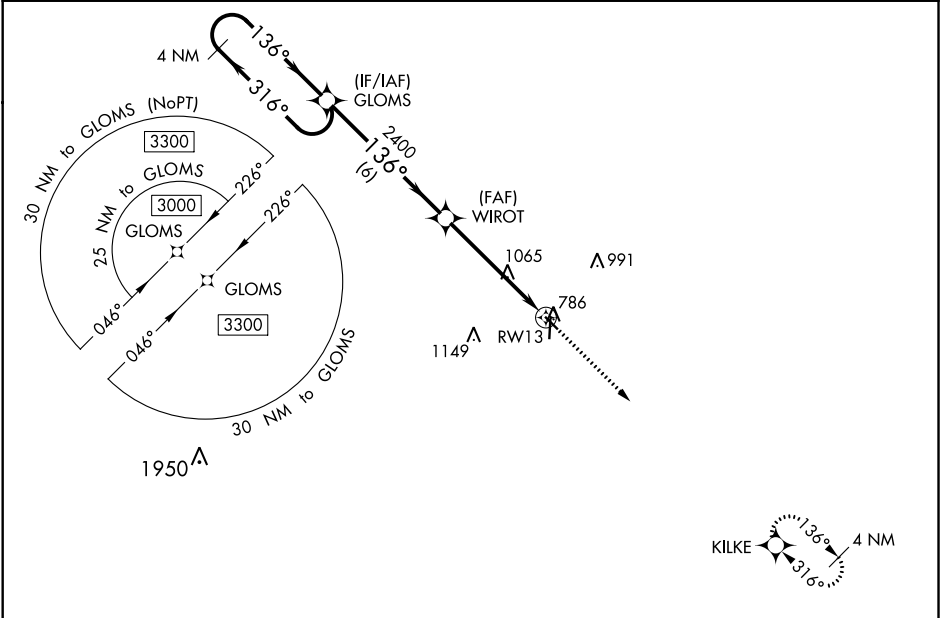
For uncompensated Baro-VNAV systems, LNAV/VNAV NA below -6°C (22°F) or above 54°C (130°F).

▲

Baro-VNAV and VDP NA when using Iowa City altimeter setting. When local altimeter setting not received, use Iowa City altimeter setting: increase LPV DA to 1066 feet, LNAV/VNAV DA to 1282 feet; increase all MDAs 80 feet and visibility LNAV and Circling Cat C ¼ SM.

MISSED APPROACH: Climb to 3000 direct KILKE and hold.

AWOS-3 <b>127.825</b>	CHICAGO CENTER <b>135.6 370.95</b>	UNICOM <b>122.7 (CTAF) 0</b>
--------------------------	---------------------------------------	---------------------------------



ELEV 754		TDZE 754	
136° to RWY 13		81	
GP 3.00° TCH 37		36	
4000 X 75		3401 X 40	
MRL Rwy 13-31 and 18-36		REIL Rwy 13, 31, 18 and 36	

CATEGORY	A	B	C	D
LPV DA	1004-1	250 (300-1)		NA
LNAV/VNAV DA	1220-1½	466 (500-1½)		NA
LNAV MDA	1320-1	566 (600-1)	1320-1½ 566 (600-1½)	NA
CIRCLING	1320-1	566 (600-1)	1500-2¼ 746 (800-2¼)	NA