

WAAS CH 90538 W31A	APP CRS 316°	Rwy Idg 3401 TDZE 754 Apt Elev 754
--	------------------------	---

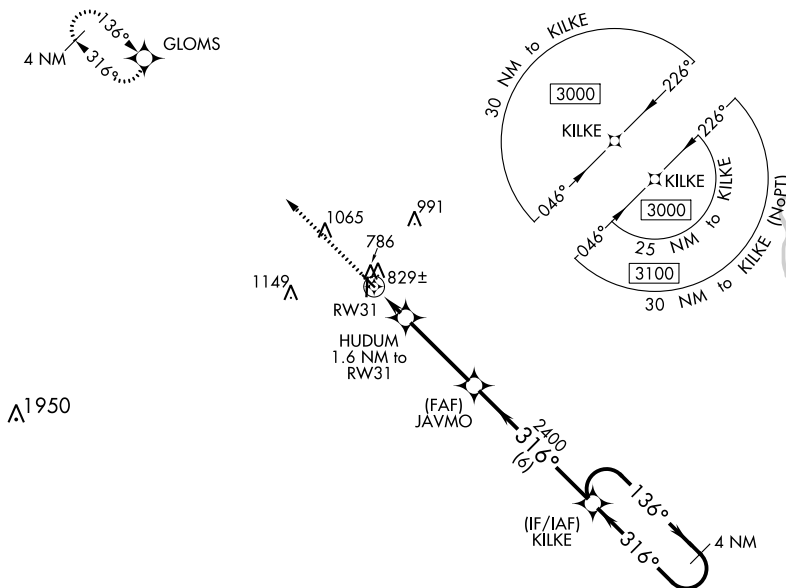
RNAV (GPS) RWY 31
WASHINGTON MUNI (AWG)

RNP APCH.

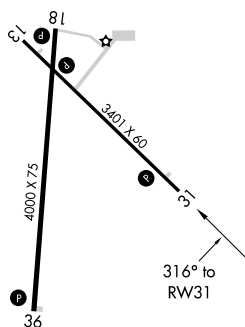
▲ For uncompensated Baro-VNAV systems, LNAV/VNAV NA below -6°C (22°F) or above 54°C (130°F).
▲ Rwy 31 helicopter visibility reduction below ¾ SM. Baro-VNAV and VDP NA when using lowa City altimeter setting. When local altimeter setting not received, use lowa City altimeter setting: increase LPV and LNAV/VNAV DA to 1066 feet; increase all MDAs 80 feet and visibility LNAV Cat C ½ SM and Circling Cat C ¼ SM.

MISSED APPROACH:
Climb to 3000 direct
GLOMS and hold.

AWOS-3 127.825	CHICAGO CENTER 135.6 370.95	UNICOM 122.7 (CTAF) L
--------------------------	---------------------------------------	--



ELEV 754		TDZE 754
----------	--	----------

MIRL Rwyys 13-31 and 18-36 **L**REIL Rwy's 13, 31, 18 and 36 **L**

3000 GLOMS VGS1 and RNAV glidepath not coincident (VGS1 Angle 3.00/TCH 30). KILKE 4 NM Holding Pattern

JAVMO 2400


HUDUM 1.6 NM to RW31

*RNAV only

*0.9 NM to RW31

*1280 2400 316° 136° 3000

GP 3.00° TCH 34

		← 0.9 NM	← 0.7 NM	← 3.5 NM	← 6 NM		
CATEGORY		A		B	C		D
LPV	DA	1004-1		250 (300-1)		NA	
LNAV/ VNAV	DA	1004-1		250 (300-1)		NA	
LNAV	MDA	1080-1		326 (400-1)		NA	
 CIRCLING		1200-1 446 (500-1)	1260-1 506 (600-1)	1500-2¼ 746 (800-2¼)		NA	