

WAAS CH 45715 W33A	APP CRS 333°	Rwy Idg TDZE 486 Apt Elev 488
--	------------------------	---

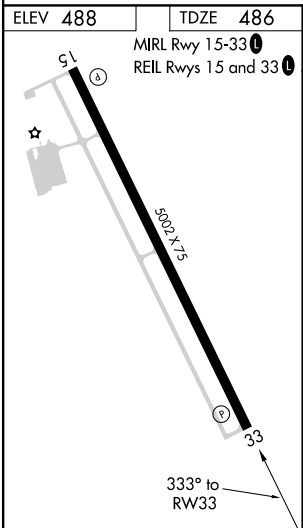
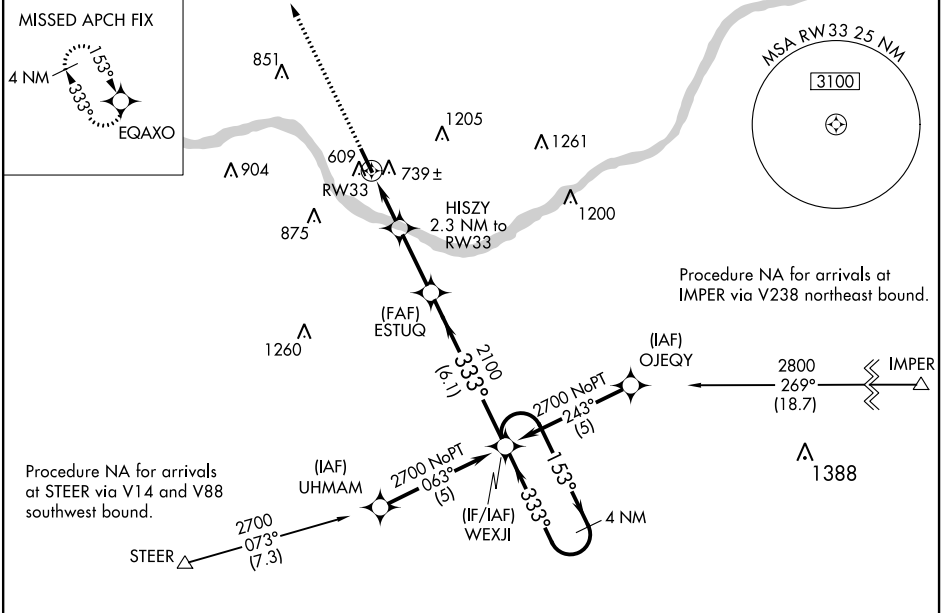
RNAV (GPS) RWY 33


WASHINGTON RGNL (FYG)

⚠ For uncompensated Baro-VNAV systems, LNAV/VNAV NA below -15°C (5°F) or above 54°C (130°F). DME/DME RNP-0.3 NA. Visibility reduction by helicopters NA. When local altimeter setting not received, use Spirit of St. Louis altimeter setting and increase all DA 42 feet and all MDA 60 feet, increase LNAV/VNAV all Cats visibility ¼ mile and Circling Cat D visibility ¼ mile. VDP and Baro-VNAV NA when using Spirit of St. Louis altimeter setting.

MISSED APPROACH: Climb to 2700 direct EQAXO and hold.

AWOS-3 121.325	ST. LOUIS APP CON 126.5 254.3	UNICOM 122.8 (CTAF) 
--------------------------	---	---



2700 ↑	EQAXO 					
* LNAV only		4 NM Holding Pattern				
HISZY 2.3 NM to RW33		ESTUQ		WEXJI		
* 1.5 NM to RW33		153° →		← 333°	2700	
RW33 ↻		333°		GP 3.00° TCH 43		
1260*		2100				
1.5 0.8		2.6 NM		6.1 NM		
CATEGORY	A	B	C	D		
LPV DA	824-1¼ 338 (400-1¼)				NA	
LNAV/ VNAV	DA	1051-2 565 (600-2)				NA
LNAV MDA	1000-1 514 (600-1)			1000-1½ 514 (600-1½)		NA
CIRCLING	1220-1 732 (800-1)	1260-1¼ 772 (800-1¼)	1260-2¼ 772 (800-2¼)		NA	