

WAAS
CH **65903**
W01A

APP CRS
007°

Rwy Idg **4206**
TDZE **797**
Apt Elev **798**

RNAV (GPS) RWY 1
SKYHAVEN (RCM)

⚠ Baro-VNAV NA when using Whiteman AFB altimeter setting. For uncompensated Baro-VNAV systems, LNAV/VNAV NA below -16°C (4°F) or above 54°C (130°F). DME/DME RNP-0.3 NA.

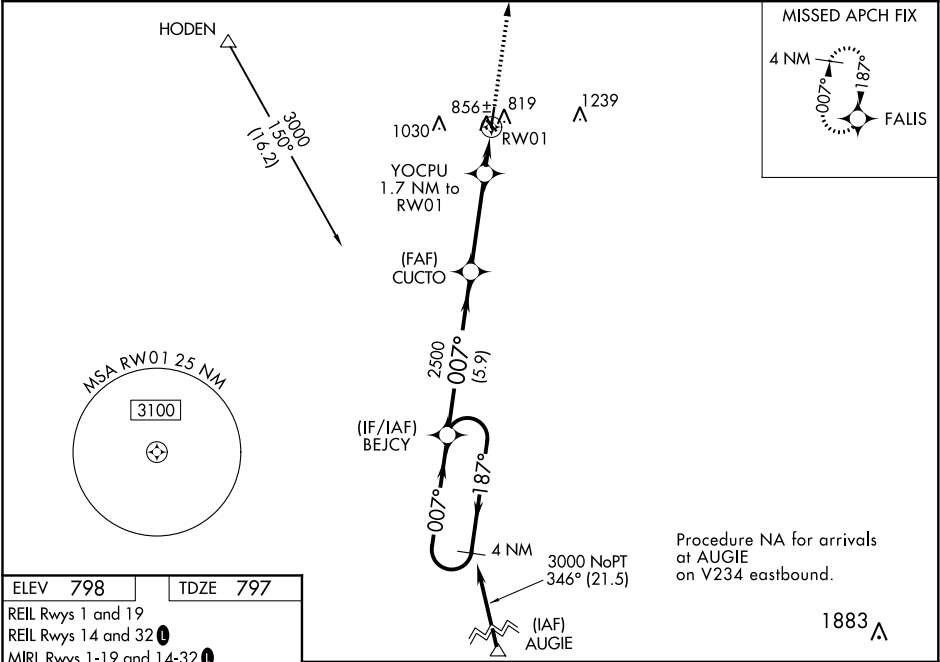
⚠ Helicopter visibility reduction below ¾ SM NA. When local altimeter setting not received, use Whiteman AFB altimeter setting and increase all DA 39 feet and all MDA 40 feet; increase LNAV/VNAV all Cats and LNAV Cat C visibility ½ mile, and increase Cat C Circling visibility ¼ mile.

MISSED APPROACH:
Climb to 3000 direct
FALIS and hold.

AWOS-3
119.575

WHITEMAN APP CON ★
127.45 284.0

UNICOM
123.0 (CTAF) 0



ELEV **798** TDZE **797**

REIL Rwy's 1 and 19
REIL Rwy's 14 and 32
MIRL Rwy's 1-19 and 14-32

61

4206 X 75

2801 X 40

007° to RW01

0.4% UP

4 NM Holding Pattern

3000 ← 187°
007° →

GP 3.00°
TCH 36

BEJCY

CUCTO

2500

YOCPU
1.7 NM to RW01

187°

007°

2500

*1360

5.9 NM

3.6 NM

1.7

3000

FALIS

*LNAV only.

CATEGORY	A	B	C	D
LPV DA	1047-1	250 (300-1)		NA
LNAV/VNAV DA	1158-1¼	361 (400-1¼)		NA
LNAV MDA	1220-1	423 (500-1)	1220-1¼ 423 (500-1¼)	NA
CIRCLING	1260-1 462 (500-1)	1340-1 542 (600-1)	1380-1½ 582 (600-1½)	NA