

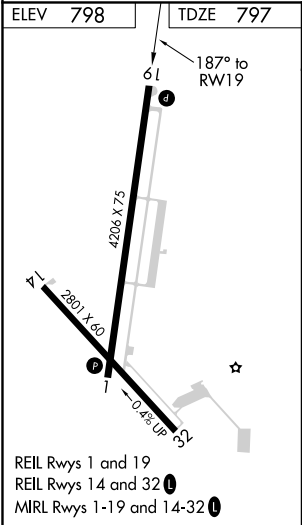
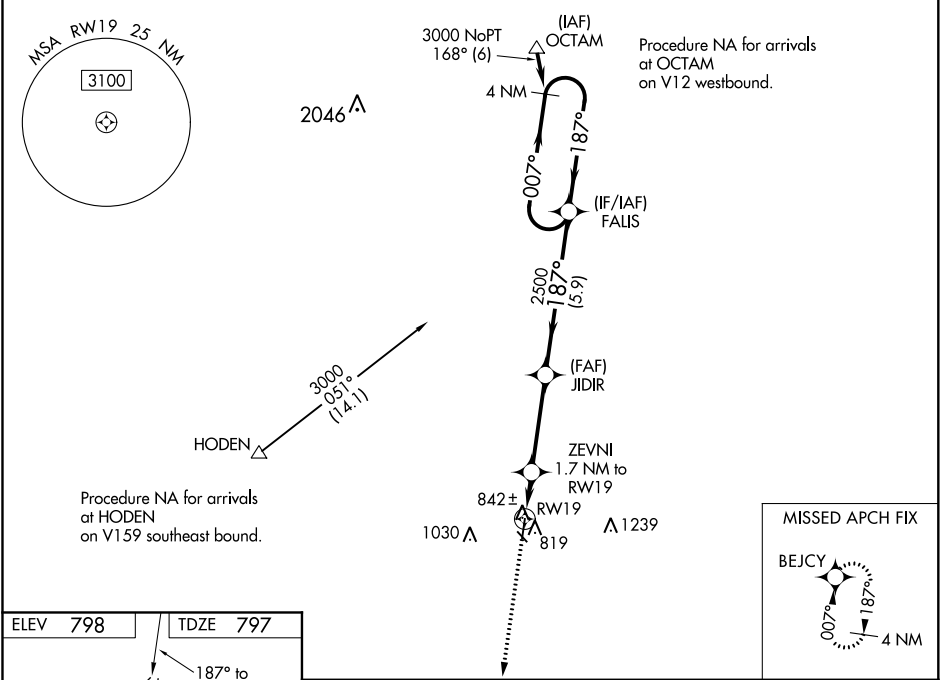
WAAS CH 45803 W19A	APP CRS 187°	Rwy Idg 4206 TDZE 797 Apt Elev 798
--	------------------------	---

RNAV (GPS) RWY 19
SKYHAVEN (RCM)

⚠ Baro-VNAV NA when using Whiteman AFB altimeter setting. For uncompensated Baro-VNAV systems, LNAV/VNAV NA below -16°C (4°F) or above 54°C (130°F). DME/DME RNP-0.3 NA. When local altimeter setting not received, use Whiteman AFB altimeter setting and increase all DA 39 feet and all MDA 40 feet; increase LNAV/VNAV all Cats visibility 1/8 mile, and increase Cat C Circling visibility 1/4 mile.

MISSED APPROACH:
Climb to 3000 direct
BEJCY and hold.

AWOS-3 119.575	WHITEMAN APP CON ★ 127.45 284.0	UNICOM 123.0 (CTAF) 0
--------------------------	---	---------------------------------



3000 BEJCY		FALIS		4 NM Holding Pattern	
*LNAV only.		JIDIR 2500		007° → 3000 ← 187°	
RW19 1.7 NM to RW19		ZEVNI 1.7 NM to RW19		GP 3.00° TCH 40	
1.7 NM		3.5 NM		5.9 NM	
CATEGORY	A	B	C	D	
LPV DA	1047-1	250 (300-1)		NA	
LNAV/VNAV DA	1102-1	305 (400-1)		NA	
LNAV MDA	1240-1	443 (500-1)	1240-1 3/8 443 (500-1 3/8)	NA	
CIRCLING	1260-1 462 (500-1)	1340-1 542 (600-1)	1380-1 1/2 582 (600-1 1/2)	NA	

NC-3, 03 DEC 2020 to 31 DEC 2020

NC-3, 03 DEC 2020 to 31 DEC 2020