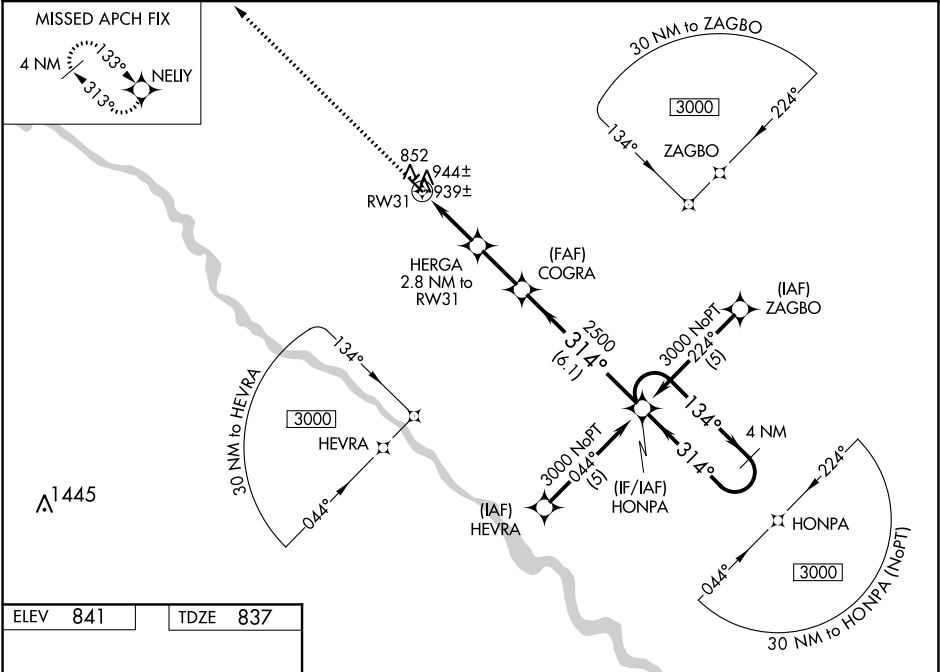


WAAS CH 82515 W31A	APP CRS 314°	Rwy Idg 4012 TDZE 837 Apt Elev 841
--	------------------------	---

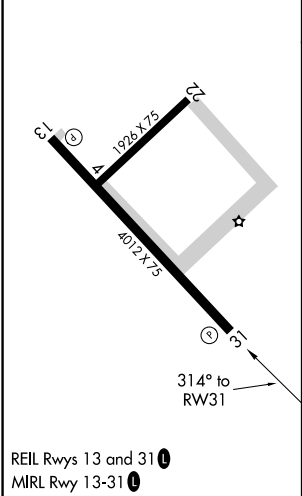
RNAV (GPS) RWY 31
OSKALOOSA MUNI (00A)

RNP APCH. ▼ When local altimeter setting not received, use Ottumwa altimeter setting and increase all DA 18 feet and all MDA 20 feet and increase LNAV/VNAV all Cals visibility ¼ mile. Baro-VNAV and VDP NA when using Ottumwa altimeter setting. For uncompensated Baro-VNAV systems, LNAV/VNAV NA below -1.6°C (4°F) or above 54°C (130°F).	MISSED APPROACH: Climb to 3000 direct NELLY and hold.
---	---

AWOS-3 118.625	CHICAGO CENTER 118.15 335.575	UNICOM 122.8 (CTAF) 0
--------------------------	---	---------------------------------



ELEV 841	TDZE 837
-----------------	-----------------



3000

↑

NELLY

VGSI and RNAV glidepath not coincident (VGSI Angle 3.00°/TCH 22).

HERGA

2.8 NM to RW31

COGRA

314°

2500

HONPA

4 NM Holding Pattern

134°

314°

3000

*LNAV Only

1.1

1.7

2.2 NM

6.1 NM

1760*

GP 3.00°

TCH 40

*1.1 NM to RW31

RW31

1.1

1.1

1.7

2.2 NM

6.1 NM

CATEGORY	A	B	C	D
LPV DA	1187-1¼	350 (400-1¼)		NA
LNAV/ VNAV DA	1209-1¼	372 (400-1¼)		NA
LNAV MDA	1200-1	363 (400-1)		NA
CIRCLING	1260-1 419 (500-1)	1300-1 459 (500-1)	1300-1½ 459 (500-1½)	NA

NC-3, 03 DEC 2020 to 31 DEC 2020

NC-3, 03 DEC 2020 to 31 DEC 2020