

WAAS CH 82742 W16A	APP CRS 167°	Rwy Idg 2797 TDZE 1363 Apt Elev 1363
--	------------------------	---

RNAV (GPS) RWY 16

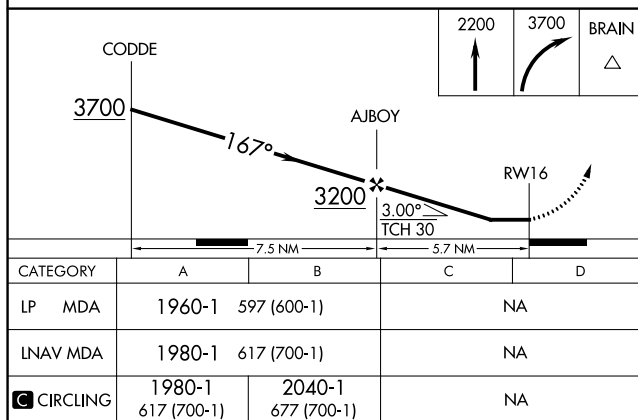
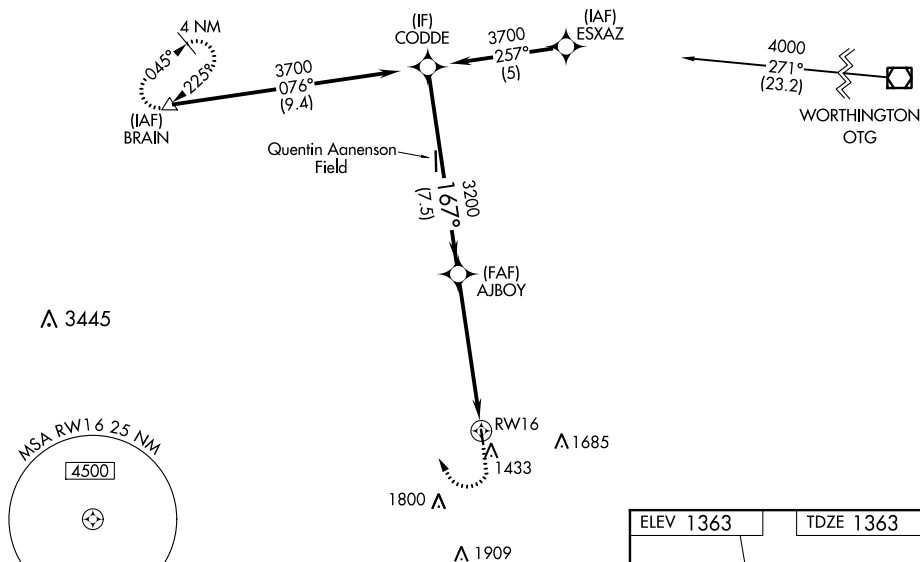
ROCK RAPIDS MUNI (RRQ)


RNP APCH

T Procedure NA at night. Rwy 16 helicopter visibility reduction
A NA below 1 SM NA. Use Sioux Falls, SD altimeter setting.

MISSED APPROACH: Climb to 2200 then climbing right turn to 3700 direct BRAIN and hold.

SIOUX FALLS APP CON★
 126.9 284.725

UNICOM
122.8 (CTAF) **L**

CATEGORY	A	B	C	D
LP MDA	1960-1	597 (600-1)	NA	
LNAV MDA	1980-1	617 (700-1)	NA	
 CIRCLING	1980-1 617 (700-1)	2040-1 677 (700-1)	NA	

