

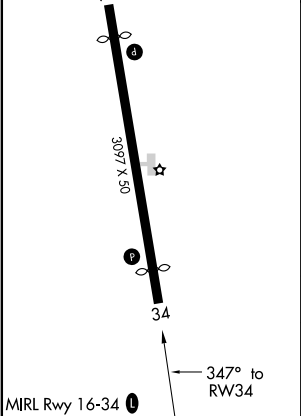
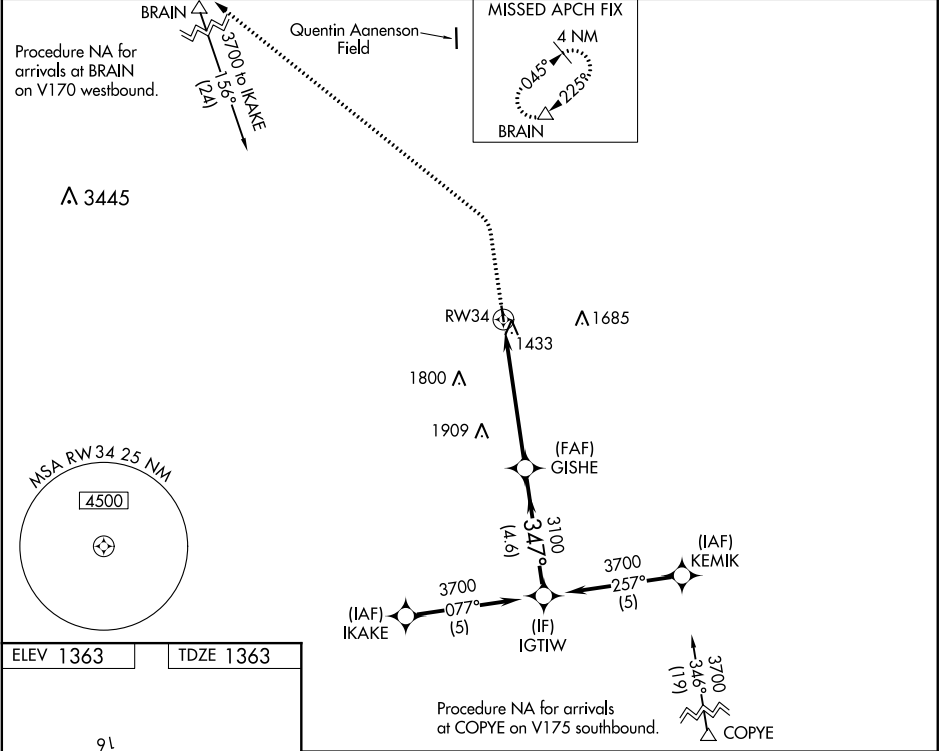
WAAS CH <b>40044</b> <b>W34A</b>	APP CRS <b>347°</b>	Rwy Idg TDZE Apt Elev	<b>2797</b> <b>1363</b> <b>1363</b>
--	------------------------	-----------------------------	---

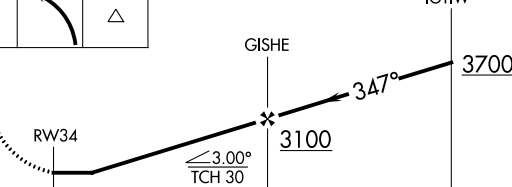
RNAV (GPS) RWY 34

ROCK RAPIDS MUNI (RRQ)

RNP APCH.	Procedure NA at night. Rwy 34 helicopter visibility reduction below 1 SM NA. Use Sioux Falls, SD altimeter setting.	MISSED APPROACH: Climb to 2200 then climbing left turn to 3700 direct BRAIN and hold.
-----------	---	---

SIOUX FALLS APP CON ★ <b>126.9 284.725</b>	UNICOM <b>122.8 (CTAF) 0</b>
---	---------------------------------



2200	3700	BRAIN		
↑	↷	△		
				
CATEGORY	A	B	C	D
LP MDA	1960-1	597 (600-1)	NA	
LNAV MDA	1960-1	597 (600-1)	NA	
CIRCLING	1960-1	2040-1	NA	
	597 (600-1)	677 (700-1)		