

WAAS CH <b>62917</b> <b>W27A</b>	APP CRS <b>272°</b>	Rwy Idg TDZE <b>839</b> Apt Elev <b>842</b>	<b>4000</b>
--	------------------------	---	-------------

RNAV (GPS) RWY 27

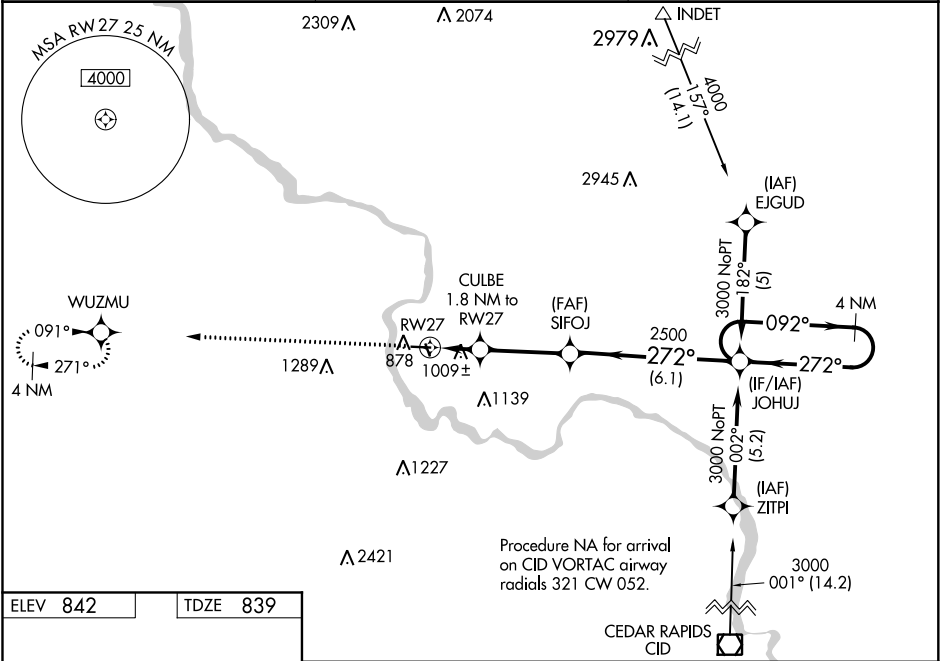
VINTON VETERANS MEMORIAL AIRPARK (VTI)

⚠

When VGSI inoperative, Circling Rwy 9 NA at night. For uncompensated Baro-VNAV systems, LNAV/VNAV NA below -16°C (4°F) or above 54°C (130°F). DME/DME RNP-0.3 NA. Visibility reduction by helicopters NA. When local altimeter setting not received, use Independence altimeter setting and increase all DA 54 feet and all MDA 60 feet, and increase LNAV/VNAV all Cats visibility ¼ mile. Baro-VNAV and VDP NA when using Independence altimeter setting.

MISSED APPROACH: Climb to 3000 direct WUZMU and hold.

AWOS-3 <b>120.075</b>	CEDAR RAPIDS APP CON ★ <b>134.05 266.8</b>	UNICOM <b>122.8 (CTAF) ①</b>
--------------------------	---	---------------------------------



ELEV <b>842</b>	TDZE <b>839</b>
-----------------	-----------------

3000

WUZMU

VGSI and RNAV glidepath not coincident (VGSI Angle 3.00/TCH 32).

\*LNAV only

CULBE 1.8 NM to RW27

SIFOJ 2500

JOHUU 4 NM Holding Pattern

1.2 NM to RW27

1.440\*

2500

3000

GP 3.00° TCH 40

1.2 NM

0.6

3.2 NM

6.1 NM

CATEGORY	A	B	C	D
LPV DA	1089-1	250 (300-1)	NA	NA
LNAV/VNAV DA	1323-1¾	484 (500-1¾)	NA	NA
LNAV MDA	1260-1	421 (500-1)	NA	NA
CIRCLING	1320-1	478 (500-1)	NA	NA