

APP CRS	Rwy Idg	4000
091°	TDZE	836
	Apt Elev	842

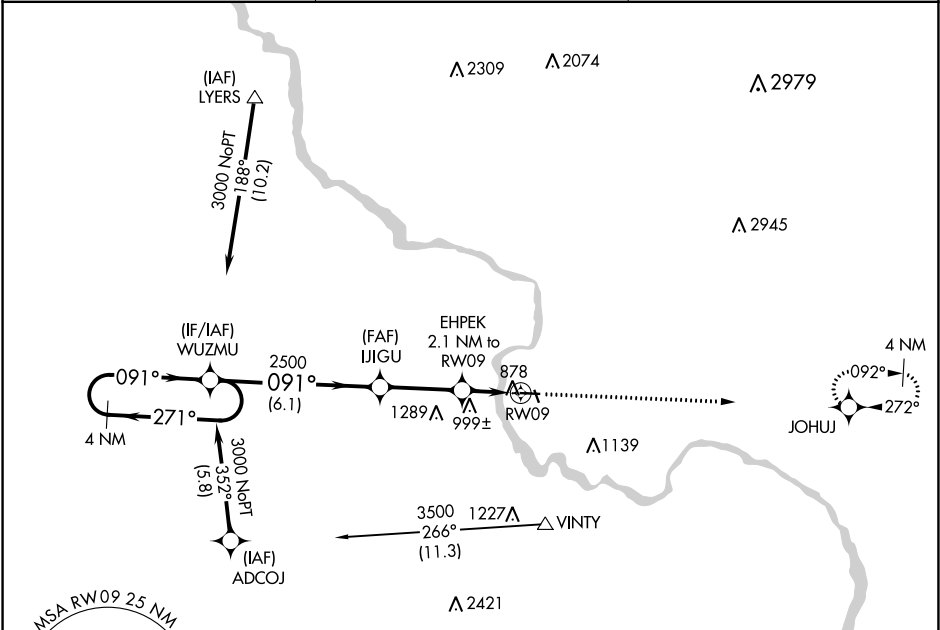
RNAV (GPS) RWY 9

VINTON VETERANS MEMORIAL AIRPARK (VTI)

⚠ When VGSi inoperative, Straight-in/Circling Rwy 9 procedure NA at night.
⚠ DME/DME RNP-0.3 NA. Visibility reduction by helicopters NA. When local altimeter setting not received, use Independence altimeter setting and increase all MDA 60 feet.

MISSED APPROACH: Climb to 3000 direct JOHUJ and hold.

AWOS-3 120.075	CEDAR RAPIDS APP CON ★ 134.05 266.8	UNICOM 122.8 (CTAF) 0
-------------------	--	---------------------------------



ELEV 842

TDZE 836

VGSI and descent angles not coincident (VGSI Angle 4.00/TCH 45)

4 NM Holding Pattern

3000

271°

091°

WUZMU

IJIGU

EHPEK 2.1 NM to RW09

3.04° TCH 45

2500

1540

RW09

6.1 NM

3 NM

2.1 NM

JOHUJ

091° to RW09

4000 x 60

0.4 % UP

91

27

34

2500 x 50

CATEGORY	A	B	C	D
LNAV MDA	1260-1	424 (500-1)	NA	
CIRCLING	1320-1	478 (500-1)	NA	

REIL Rwy 9 and 27 **0**
MIRL Rwy 9-27 **0**

NC-3, 03 DEC 2020 to 31 DEC 2020

NC-3, 03 DEC 2020 to 31 DEC 2020