

LAMAR, MISSOURI

AL-6725 (FAA)

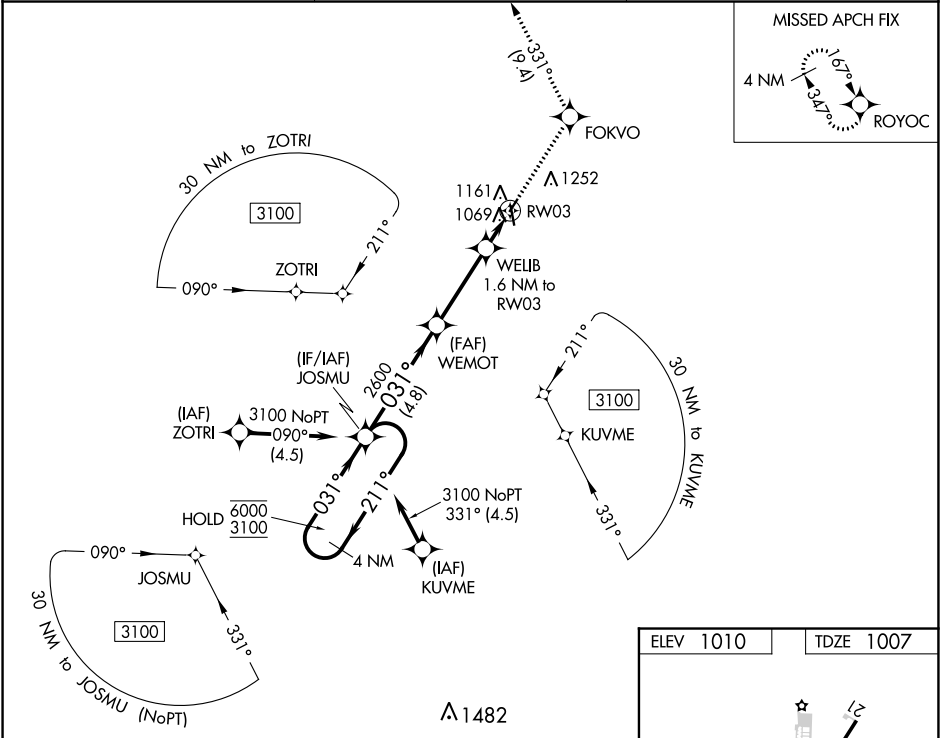
19339

WAAS CH 45536 W03A	APP CRS 031°	Rwy Idg TDZE Apt Elev	2900 1007 1010
--	------------------------	-----------------------------	---

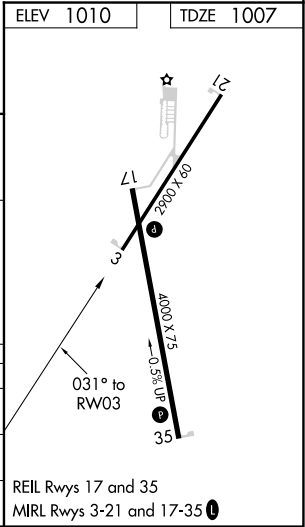
RNAV (GPS) RWY 3
LAMAR MUNI (LLU)

RNP APCH.	MISSED APPROACH: Climb to 3100 direct FOKVO and on track 331° to ROYOC and hold.
Circling Rwy 21 NA at night. Use Joplin altimeter setting. NA Rwy 3 helicopter visibility reduction below 3/4 SM NA.	

JLN ASOS 120.85	KANSAS CITY CENTER 128.6 282.325	CTAF 122.9
---------------------------	--	----------------------



4 NM Holding Pattern		JOSMU	WEMOT	3100 ↑	FOKVO ✧	tr 331°	ROYOC ✧
6000 ← 211°	3100 → 031°	031°	2600	3.00° ≥ TCH 40	1.6 NM to RW03		
		4.8 NM	3.3 NM	1.6 NM			
CATEGORY	A	B	C	D			
LP MDA	1380-1	373 (400-1)			NA		
LNAV MDA	1480-1	473 (500-1)			NA		
CIRCLING	1520-1 510 (600-1)	1620-1 610 (700-1)			NA		



LAMAR, MISSOURI
Amdt 1B 05DEC19

37°29'N-94°19'W

RNAV (GPS) RWY 3
LAMAR MUNI (LLU)

NC-3, 03 DEC 2020 to 31 DEC 2020

NC-3, 03 DEC 2020 to 31 DEC 2020