

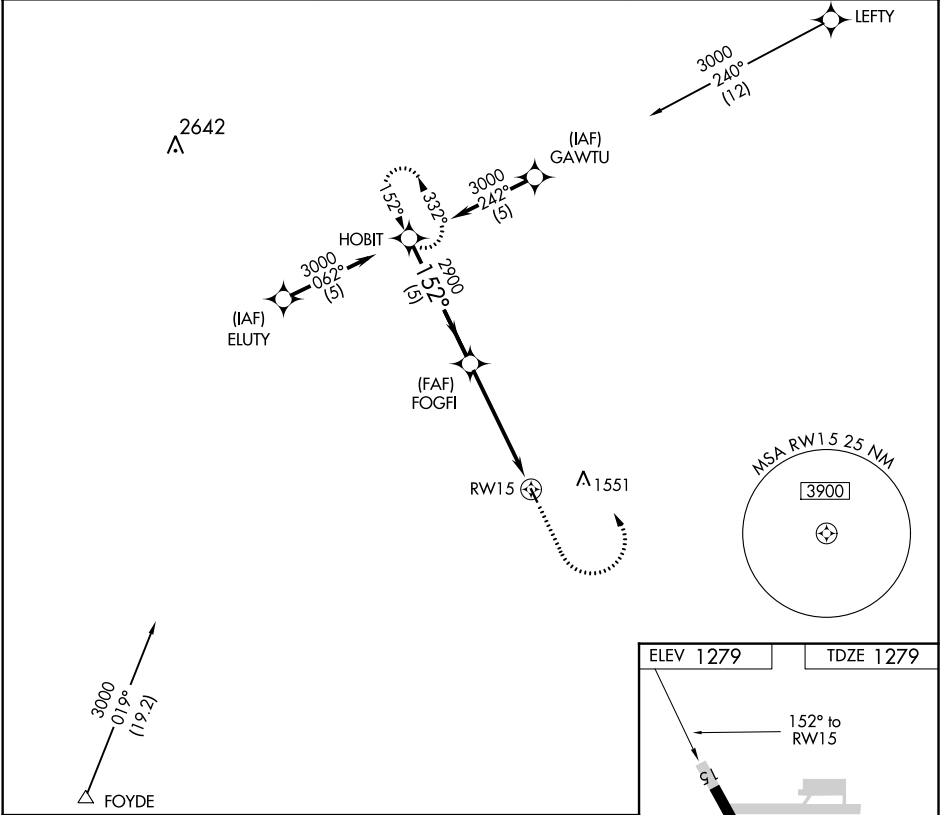
APP CRS	Rwy Idg	2949
152°	TDZE	1279
	Apt Elev	1279

GPS RWY 15
ELLEN CHURCH FIELD (CJJ)

⚠ Use Decorah Muni altimeter setting. Procedure NA at night.
⚠ NA Rwy 15 helicopter visibility reduction below 1 SM NA.

MISSED APPROACH: Climb to 2400, then climbing left turn to 3000 direct HOBIT and hold.

DEH AWOS-3 120.925	MINNEAPOLIS CENTER 118.85	UNICOM 122.8 (CTAF) 0
-----------------------	------------------------------	---------------------------------



HOBIT

3000

Procedure Turn NA

152°

FOGFI

2900

2.98° ≥ TCH 40

RWY 15

5 NM

2400

3000

HOBIT

CATEGORY	A	B	C	D
S-15	1980-1	701 (800-1)	1980-2 701 (800-2)	NA
CIRCLING	1980-1	701 (800-1)	1980-2 701 (800-2)	NA

ELEV 1279

TDZE 1279

152° to RWY 15

2949 x 50

0.35 UP

LIRL Rwy 15-33 **0**

NC-3, 03 DEC 2020 to 31 DEC 2020

NC-3, 03 DEC 2020 to 31 DEC 2020