

WAAS CH 97419 W33A	APP CRS 335°	Rwy Idg TDZE Apt Elev	4000 1062 1062
--	------------------------	-----------------------------	---

RNAV (GPS) RWY 33

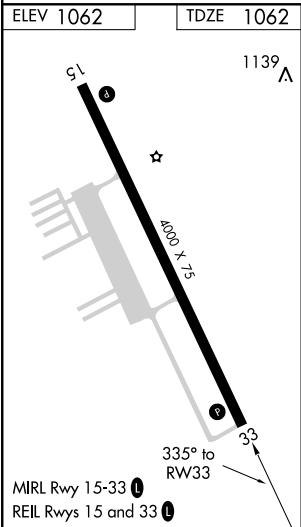
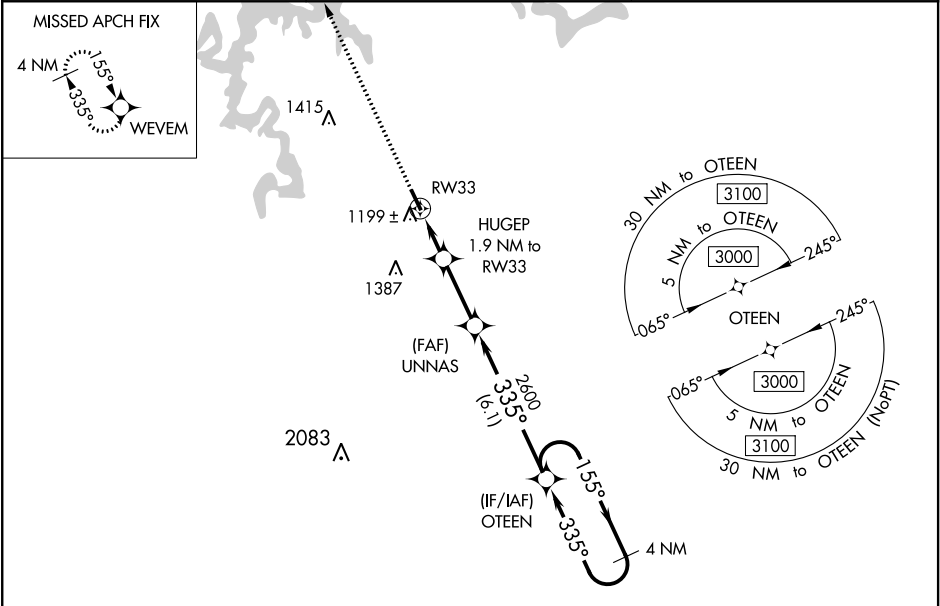
CAMDENTON MEMORIAL-LAKE RGNL (OZS)


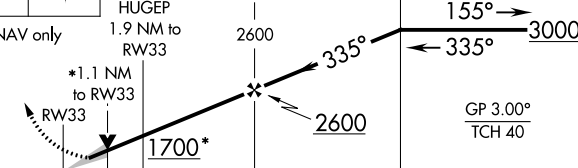

⚠

For uncompensated Baro-VNAV systems, LNAV/VNAV NA below -17°C (2°F) or above 54°C (130°F).
DME/DME RNP-0.3 NA. When local altimeter setting not received, use Lee C Fine Memorial altimeter setting and increase all DA 50 feet, all MDA 60 feet, and increase LPV all Cats and LNAV/VNAV all Cats visibility ½ mile. Baro-VNAV and VDP NA when using Lee C Fine Memorial altimeter setting.

MISSED APPROACH:
Climb to 3000 direct WEVEM and hold.

AWOS-3 120.225	MIZZU APP CON 124.1 353.7	UNICOM 122.8 (CTAF) 0
--------------------------	-------------------------------------	---------------------------------



3000 ↑	WEVEM 				
* LNAV only					
		GP 3.00° TCH 40			
		1.1	0.8	2.8 NM	6.1 NM
CATEGORY	A	B		C	D
LPV DA	1312-7 ⁷ / ₈	250 (300-7 ⁷ / ₈)		NA	
LNAV/ VNAV DA	1460-1 ³ / ₈	398 (400-1 ³ / ₈)		NA	
LNAV MDA	1460-1	398 (400-1)		NA	
 CIRCLING	1540-1	478 (500-1)		NA	