

WAAS CH <b>58107</b> <b>W13A</b>	APP CRS <b>129°</b>	Rwy Idg TDZE <b>1005</b> Apt Elev <b>1008</b>	<b>5000</b> <b>1005</b> <b>1008</b>
--	------------------------	---	---

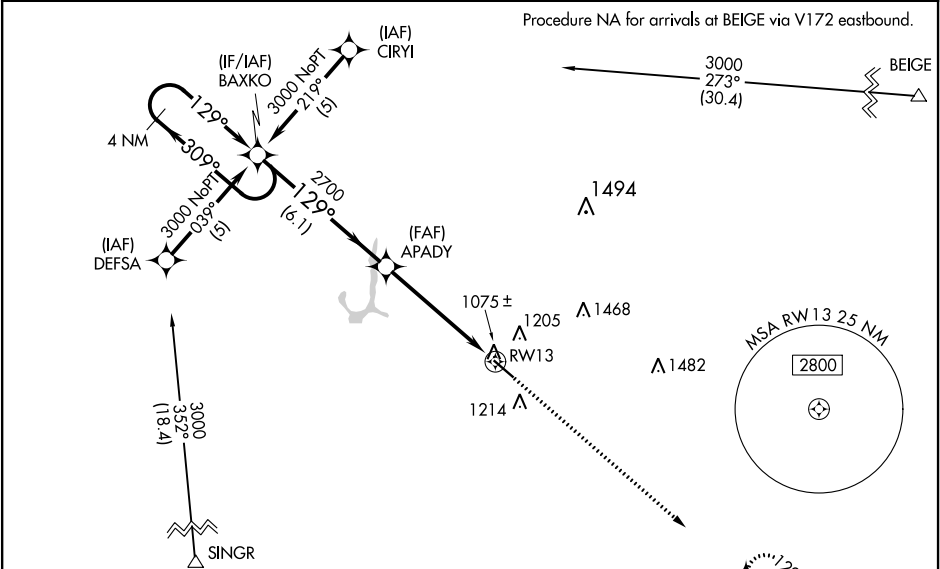
RNAV (GPS) RWY 13

GRINNELL RGNL (GGI)

**⚠** When local altimeter setting not received, use Newton altimeter setting and increase all DAs 38 feet and all MDAs 40 feet, increase LPV and LNAV/VNAV visibility ¼ mile all Cats and LNAV Cat C visibility ¼ mile. Baro-VNAV NA when using Newton altimeter setting.  
For uncompensated Baro-VNAV systems, LNAV/VNAV NA below -17°C (2°F) or above 54°C (130°F).  
Visibility reduction by helicopters NA. DME/DME RNP-0.3 NA.

MISSED APPROACH: Climb to 3000 direct PICRA and hold.

AWOS-3 <b>120.725</b>	CHICAGO CENTER <b>127.05 319.8</b>	UNICOM <b>122.8</b> (CTAF) <b>0</b>
--------------------------	---------------------------------------	--



ELEV 1008	TDZE 1005
-----------	-----------

REIL Rws 13 and 31 **0**  
MRL Rwy 13-31 **0**

4 NM Holding Pattern				3000	PICRA
CATEGORY	A	B	C	D	
LPV DA	1284-1 279 (300-1)			NA	
LNAV/VNAV DA	1415-1½ 410 (500-1½)			NA	
LNAV MDA	1480-1	475 (500-1)	1480-1¼ 475 (500-1¼)	NA	
CIRCLING	1620-1	612 (700-1)	1620-1¾ 612 (700-1¾)	NA	