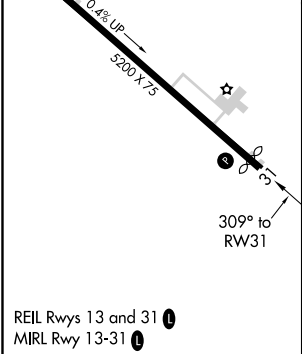
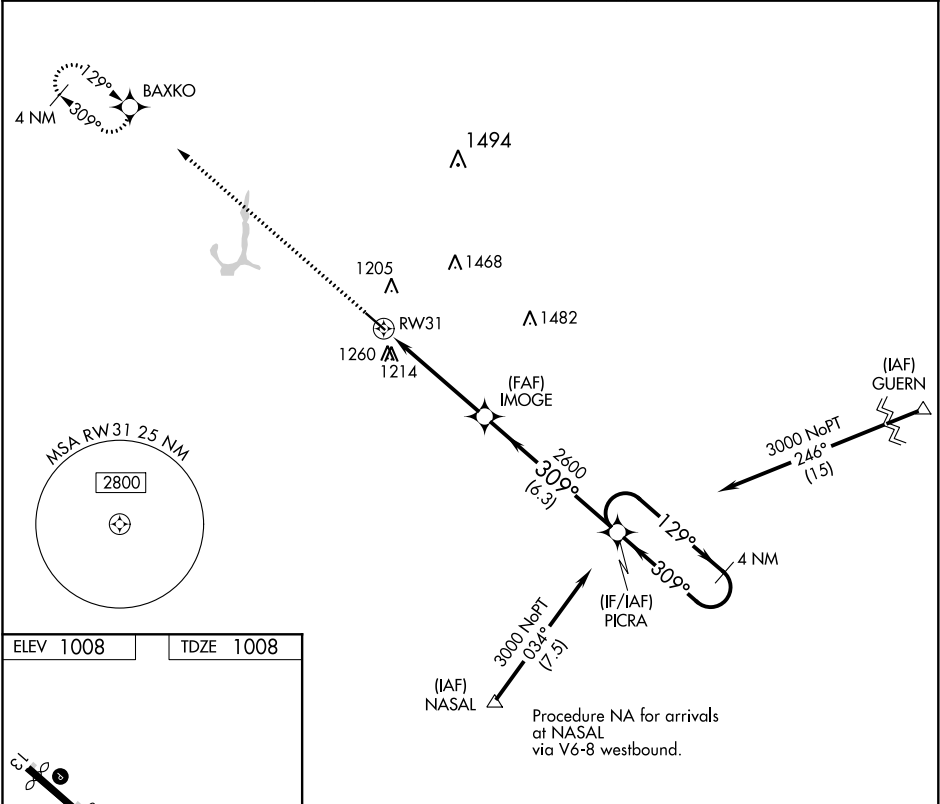




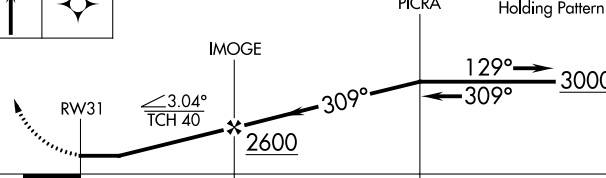
APP CRS	Rwy Idg	5000
309°	TDZE	1008
	Apt Elev	1008

RNAV (GPS) RWY 31
GRINNELL RGNL (GGI)

<p>⚠ When local altimeter setting not received, use Newton altimeter setting and increase all MDAs 40 feet. Visibility reduction by helicopters NA. DME/DME RNP-0.3 NA.</p>	<p>MISSED APPROACH: Climb to 3000 direct BAXKO and hold.</p>
--	--

AWOS-3 120.725	CHICAGO CENTER 127.05 319.8	UNICOM 122.8 (CTAF) 0
-------------------	--------------------------------	---------------------------------



3000	BAXKO	VGSI and descent angles not coincident (VGSI Angle 3.00/TCH 40).		4 NM Holding Pattern		
						
						
CATEGORY	A		B		C	D
LNAV MDA	1560-1		552 (600-1)		1560-1½ 552 (600-1½)	NA
CIRCLING	1620-1		612 (700-1)		1620-1¾ 612 (700-1¾)	NA

NC-3, 03 DEC 2020 to 31 DEC 2020

NC-3, 03 DEC 2020 to 31 DEC 2020