

WAAS CH 82017 W17A	APP CRS 172°	Rwy Idg 4000 TDZE 1040 Apt Elev 1040
--	------------------------	---

RNAV (GPS) RWY 17

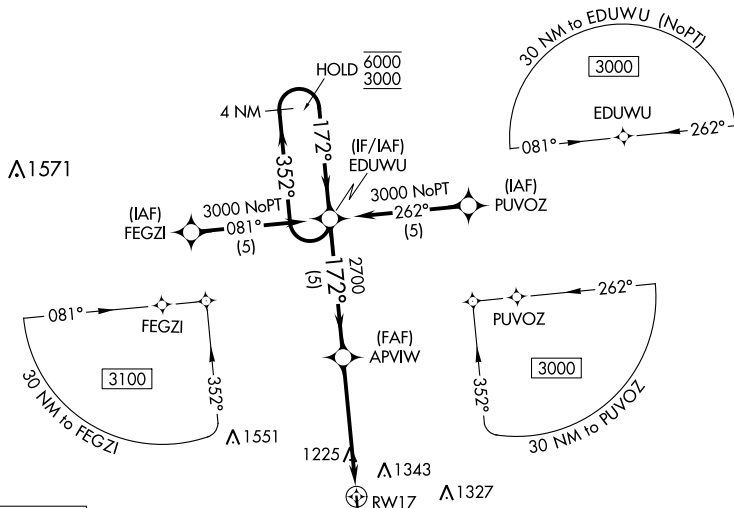
CAMERON MEMORIAL (EZZ)

RNP APCH.

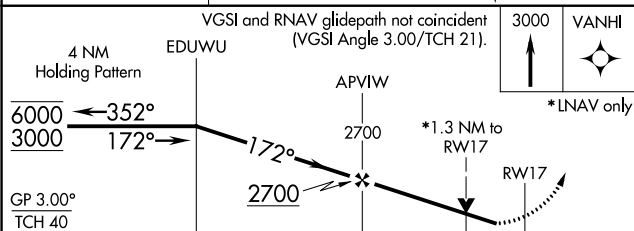
T Rwy 17 helicopter visibility reduction below $\frac{3}{4}$ SM NA.
For uncompensated Baro-VNAV systems, LNAV/VNAV NA below
-17°C or above 54°C.

MISSED APPROACH: Climb to 3000 direct VANHI and hold.

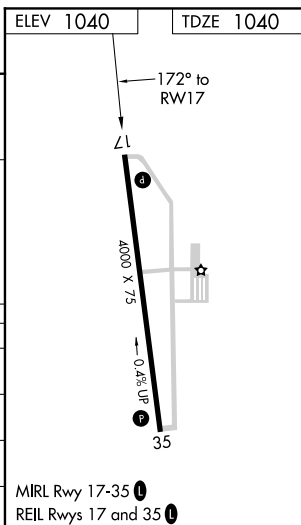
AWOS-3 121.05	KANSAS CITY APP CON 118.4 307.35	CLNC DEL 121.6	UNICOM 122.8 (CTAF) 0
-------------------------	--	--------------------------	--



MISSED APCH FIX



CATEGORY		A	B	C	D
LPV	DA	1290-3/4	250 (300-3/4)		NA
LNAV/ VNAV	DA	1518-13/8	478 (500-13/8)		NA
LNAV	MDA	1480-1	440 (500-1)		NA
CIRCLING		1660-1	620 (700-1)		NA



RNAV (GPS) RWY 17