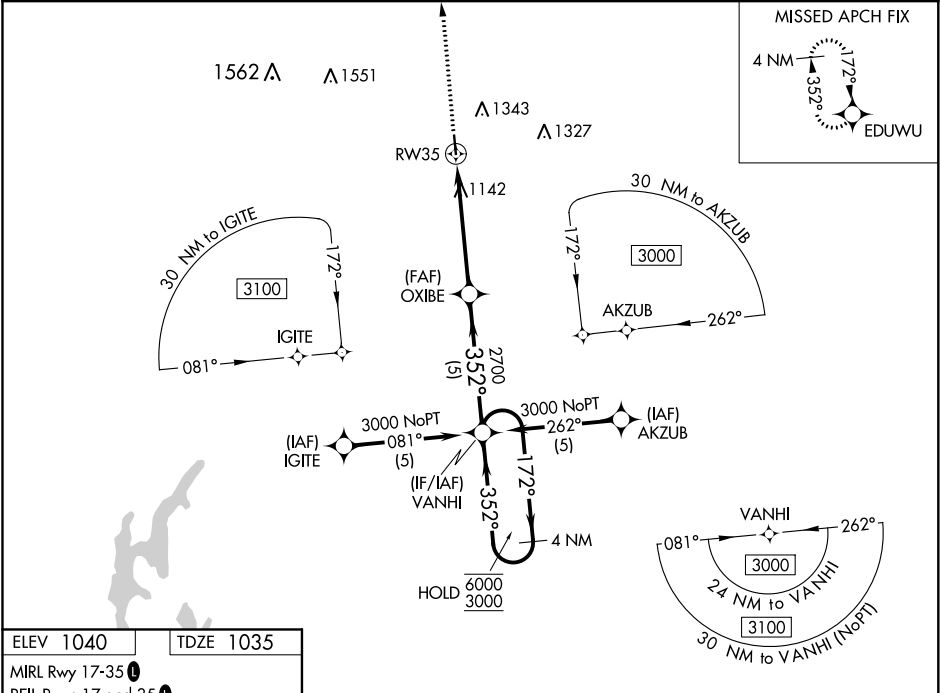


WAAS CH 77717 W35A	APP CRS 352°	Rwy Idg TDZE 1035 Apt Elev 1040
--	------------------------	---

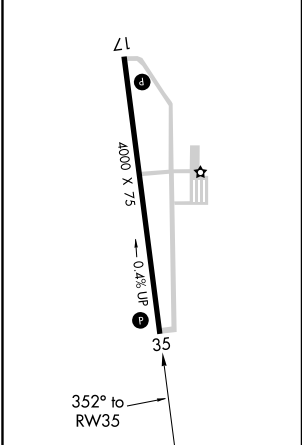
RNAV (GPS) RWY 35
CAMERON MEMORIAL (EZZ)

RNP APCH. ▼ Rwy 35 helicopter visibility reduction below ¾ SM NA. For uncompensated Baro-VNAV systems, LNAV/VNAV NA below -17°C or above 54°C.	MISSED APPROACH: Climb to 3000 direct EDUWU and hold.
---	---

AWOS-3 121.05	KANSAS CITY APP CON 118.4 307.35	CLNC DEL 121.6	UNICOM 122.8 (CTAF) 1
-------------------------	--	--------------------------	---------------------------------



ELEV 1040	TDZE 1035
MIRL Rwy 17-35 1	REIL Rwy 17 and 35 1



3000

EDUWU

VGSI and RNAV glidepath not coincident (VGSI Angle 3.00/TCH 22).

VANHI

4 NM Holding Pattern

*LNAV only

*1.3 NM to RW35

RW35

OXIBE

2700

352°

2700

172° → 6000

← 352° 3000

GP 3.00° TCH 40

1.3 NM

3.8 NM

5 NM

CATEGORY	A	B	C	D
LPV DA	1285-¾	250 (300-¾)	NA	
LNAV/VNAV DA	1310-⅞	275 (300-⅞)	NA	
LNAV MDA	1460-1	425 (500-1)	NA	
CIRCLING	1660-1	620 (700-1)	NA	