

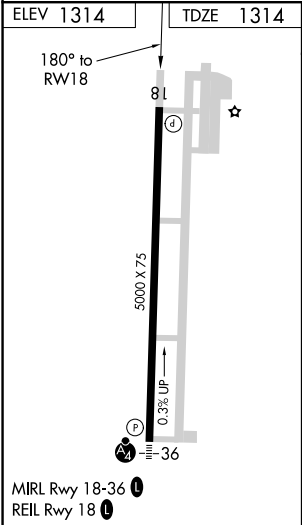
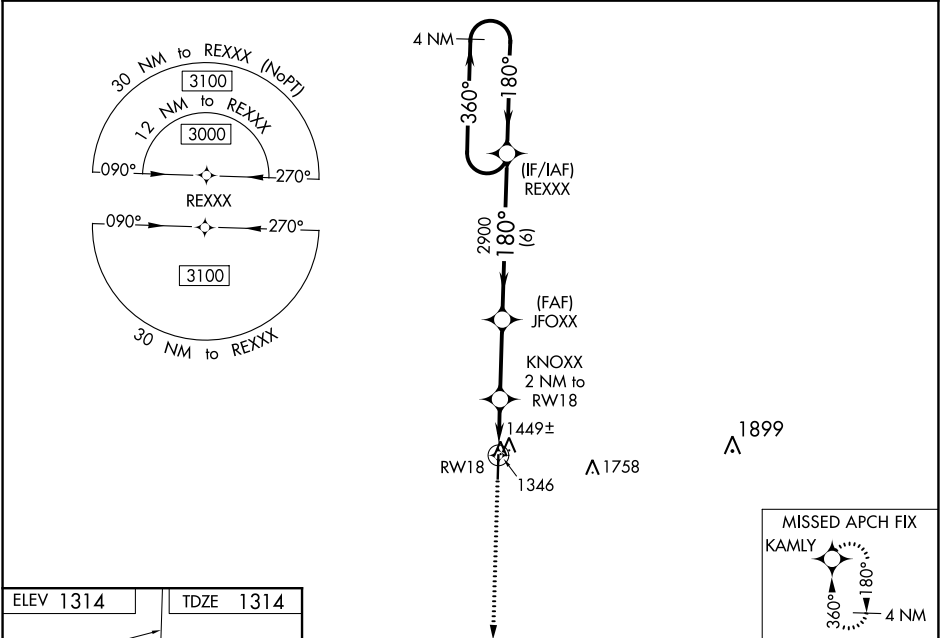
WAAS CH 53403 W18A	APP CRS 180°	Rwy Idg TDZE Apt Elev	5000 1314 1314
--	------------------------	-----------------------------	---



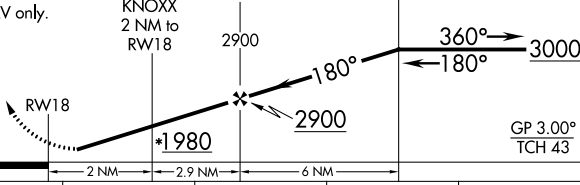

RNAV (GPS) RWY 18
MONETT RGNL (HFJ)

Baro-VNAV NA when using Joplin Rgnl altimeter setting. For uncompensated Baro-VNAV systems, LNAV/VNAV NA below -17°C (2°F) or above 54°C (130°F). When local altimeter setting not received, use Joplin Rgnl altimeter setting: increase all DA 111 feet and all MDA 120 feet; increase LPV visibility All Cats to 1¼; LNAV/VNAV all Cats and LNAV Cats C visibility to 1¾ and Circling Cat C visibility to 2. DME/DME RNP-0.3 NA.

MISSED APPROACH: Climb to 3100 direct KAMLY and hold.

AWOS-3 118.275	SPRINGFIELD APP CON 124.95 318.2	CLNC DEL 121.85	UNICOM 123.075 (CTAF) 1
--------------------------	--	---------------------------	-----------------------------------



3100	KAMLY	VGSI and RNAV glidepath not coincident.			4 NM Holding Pattern
					
*LNAV only.		KNOXX 2 NM to RW18	JFOXX 2900	REXXX	
					
		2 NM	2.9 NM	6 NM	
CATEGORY	A	B	C	D	
LPV DA	1564- ³ / ₄	250 (300- ³ / ₄)	1564-1 250 (300-1)	NA	
LNAV/ VNAV DA	1619-1 305 (400-1)			NA	
LNAV MDA	1700-1 386 (400-1)			NA	
 CIRCLING	1760-1 446 (500-1)	1900-1 586 (600-1)	1900-1½ 586 (600-1½)	NA	