

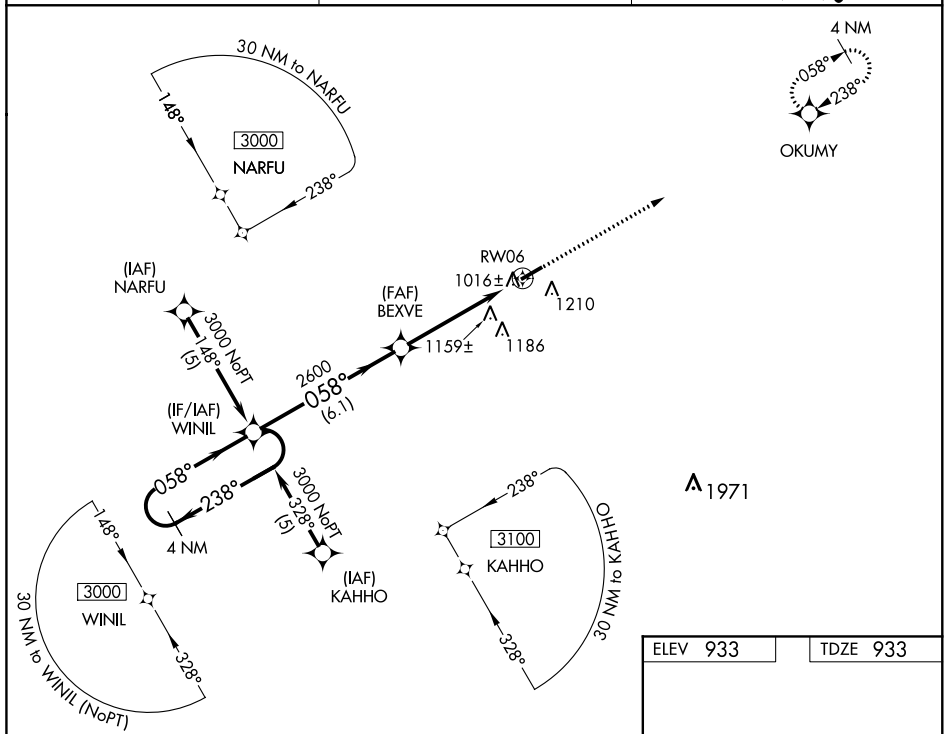
WAAS CH 82414 W06A	APP CRS 058°	Rwy Idg 4500 TDZE 933 Apt Elev 933
--	------------------------	---

RNAV (GPS) RWY 6
SULLIVAN RGNL (UUU)

NA Circling to Rwy 24NA at night. For uncompensated Baro-VNAV systems, LNAV/VNAV NA below -1.6°C (4°F) or above 5.4°C (130°F). DME/DME RNP-0.3 NA. Visibility reduction by helicopters NA. Baro-VNAV and VDP NA when using RLA National altimeter setting. When local altimeter setting not received, use RLA National altimeter setting and increase all DA 98 feet and all MDA 100 feet, increase LPV Cat A and B visibility ½ mile and LNAV/VNAV Cat A and B visibility ¼ mile.

MISSED APPROACH.
Climb to 3000 direct
OKUMY and hold.

AWOS-3 119.375	KANSAS CITY CENTER 128.35 284.675	UNICOM 122.7 (CTAF) 0
--------------------------	---	---------------------------------

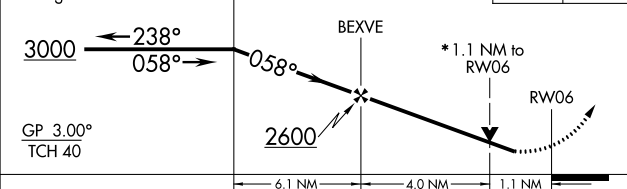


VGSI and RNAV glidepath not coincident (VGSI Angle 4.00/TCH 57).

* LNAV only.

3000	OKUMY
------	-------

4 NM
Holding Pattern



CATEGORY	A	B	C	D
LPV DA	1236-1	303 (400-1)	NA	
LNAV/VNAV DA	1488-2	555 (600-2)	NA	
LNAV MDA	1420-1	487 (500-1)	NA	
CIRCLING	1520-1	587 (600-1)	NA	

