

WAAS CH <b>82720</b> <b>W18A</b>	APP CRS <b>177°</b>	Rwy Idg TDZE Apt Elev	<b>5500</b> <b>903</b> <b>910</b>
--	------------------------	-----------------------------	---

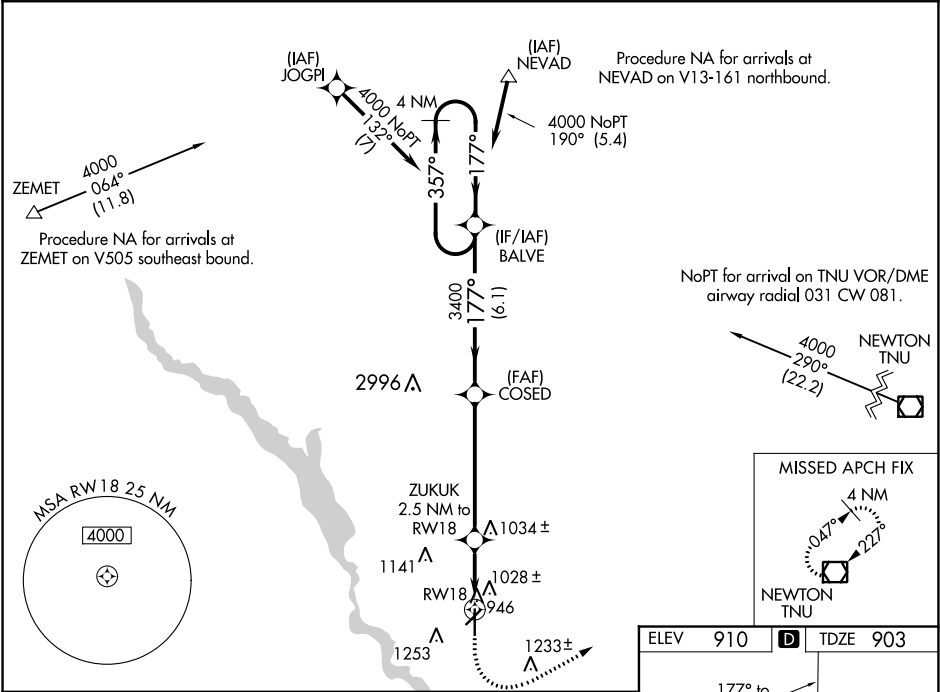
RNAV (GPS) RWY 18

ANKENY RGNL (IKV)

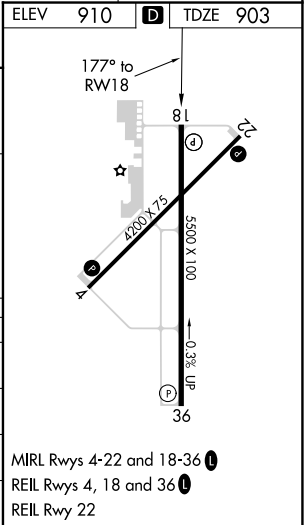
For uncompensated Baro-VNAV systems, LNAV/VNAV NA below -21° C (-5°F) or above 54°C (130°F). Circling Rwy 22 NA at night. Rwy 18 helicopter visibility reduction below ¾ SM NA. DME/DME RNP-0.3 NA.

MISSED APPROACH: Climb to 1600 then climbing left turn to 4000 direct TNU VOR/DME and hold.

AWOS-3 <b>119.175</b>	DES MOINES APP CON <b>123.9 307.15</b>	CLNC DEL <b>126.65</b>	(CTAF) <b>122.9</b>
--------------------------	---	---------------------------	------------------------



4 NM Holding Pattern				
CATEGORY	A	B	C	D
LPV DA	1153-7/8		250 (300-7/8)	
LNAV/VNAV DA	1354-1½		451 (500-1½)	
LNAV MDA	1480-1	577 (600-1)	1480-1½	577 (600-1½)
CIRCLING	1560-1	650 (700-1)	1560-1¾	1760-2¾
			650 (700-1¾)	850 (900-2¾)



NC-3, 03 DEC 2020 to 31 DEC 2020

NC-3, 03 DEC 2020 to 31 DEC 2020