

WAAS CH 70512 W36A	APP CRS 357°	Rwy Idg TDZE 891 Apt Elev 910
--	------------------------	---

RNAV (GPS) RWY 36

ANKENY RGNL (IKV)

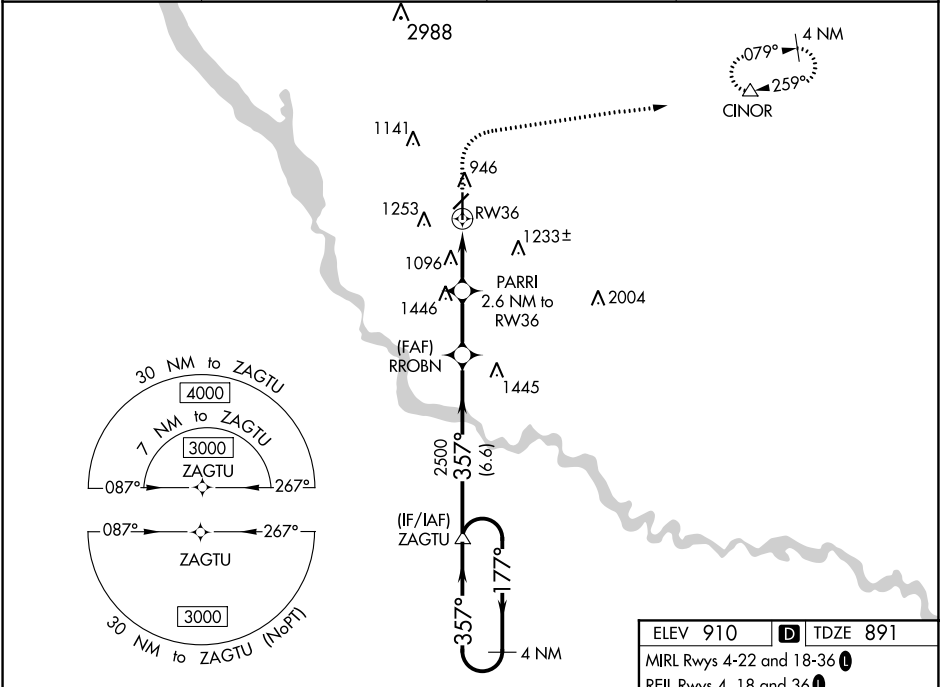
▼

▲

For uncompensated Baro-VNAV systems,
LNAV/VNAV NA below -20°C (-4°F) or above 54°C (130°F).
Circling Rwy 22 NA at night. DME/DME RNP-0.3 NA.

MISSED APPROACH: Climb to 1500
then climbing right turn to 4000 direct
CINOR and hold, continue
climb-in-hold to 4000.

AWOS-3 119.175	DES MOINES APP CON 123.9 307.15	CLNC DEL 126.65	(CTAF) 122.9 0
--------------------------	---	---------------------------	--------------------------



		ZAGTU		RROBN	2500	PARRI	2.6 NM to RW36	*1.3 NM to RW36	RW36	*LNAV only	
3000		←177°		357°→		357°		2500		*1760	
GP 3.00°		TCH 52		←6.6 NM		2.3 NM		1.3 NM		1.3 NM	
CATEGORY		A		B		C		D			
LPV	DA	1091-3¼		200 (200-¾)							
LNAV/VNAV	DA	1405-1¾		514 (500-1¾)							
LNAV	MDA	1360-1	469 (500-1)	1360-1¾		469 (500-1¾)					
CIRCLING		1560-1	650 (700-1)	1560-1¾		1760-2¾		650 (700-1¾)		850 (900-2¾)	

