

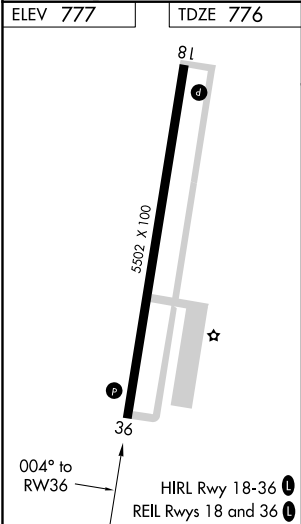
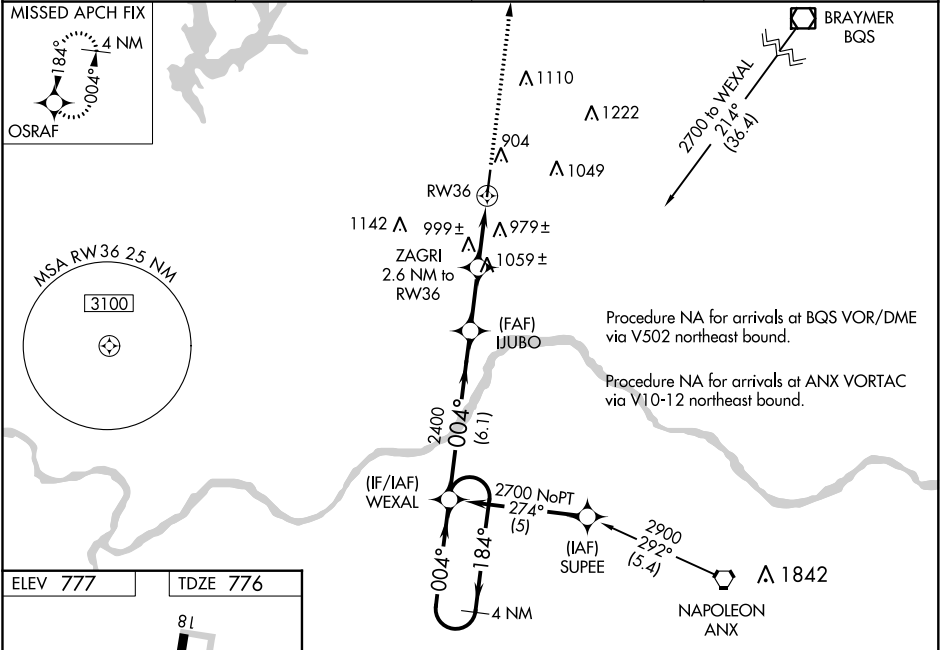
WAAS CH 86409 W36A	APP CRS 004°	Rwy Idg TDZE 776 Apt Elev 777
--	------------------------	---

RNAV (GPS) RWY 36
MIDWEST NATIONAL AIR CENTER (GPH)

NA DME/DME RNP-0.3 NA. Baro-VNAV NA when using Kansas City Intl altimeter setting. For uncompensated Baro-VNAV systems, LNAV/VNAV NA below -16°C (4°F) or above 54°C (130°F). Visibility reduction by helicopters NA. Obtain local altimeter setting on CTAF; when not received use Kansas City Intl altimeter setting and increase all DA 79 feet and all LPV and LNAV/VNAV visibilities ¼ mile; increase all MDA 80 feet and LNAV and Circling Cat C visibility ¼ mile. VDP NA when using Kansas City Intl altimeter setting.

MISSED APPROACH: Climb to 2700 direct OSRAF and hold.

AWOS-3 120.275	KANSAS CITY APP CON 118.4 307.35	CLNC DEL 118.2	UNICOM 122.7 (CTAF) 0
--------------------------	--	--------------------------	---------------------------------



4 NM Holding Pattern				WEXAL	IJUBO	ZAGRI 2.6 NM to RW36	2700	OSRAF
GP 3.00° TCH 45				184°	004°	004°	2400	*1.4 NM to RW36
				6.1 NM	2.3 NM	1.2 NM	1.4 NM	RW36
CATEGORY	A	B	C	D				
LPV DA	1105-1¼		329 (400-1¼)		NA			
LNAV/ VNAV DA	1341-2		565 (600-2)		NA			
LNAV MDA	1260-1	484 (500-1)		1260-1¼	NA			
				484 (500-1¼)				
CIRCLING	1300-1	523 (600-1)		1320-1½	NA			
				543 (600-1½)				

NC-3, 03 DEC 2020 to 31 DEC 2020

NC-3, 03 DEC 2020 to 31 DEC 2020