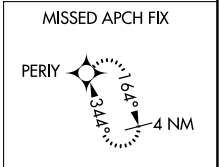
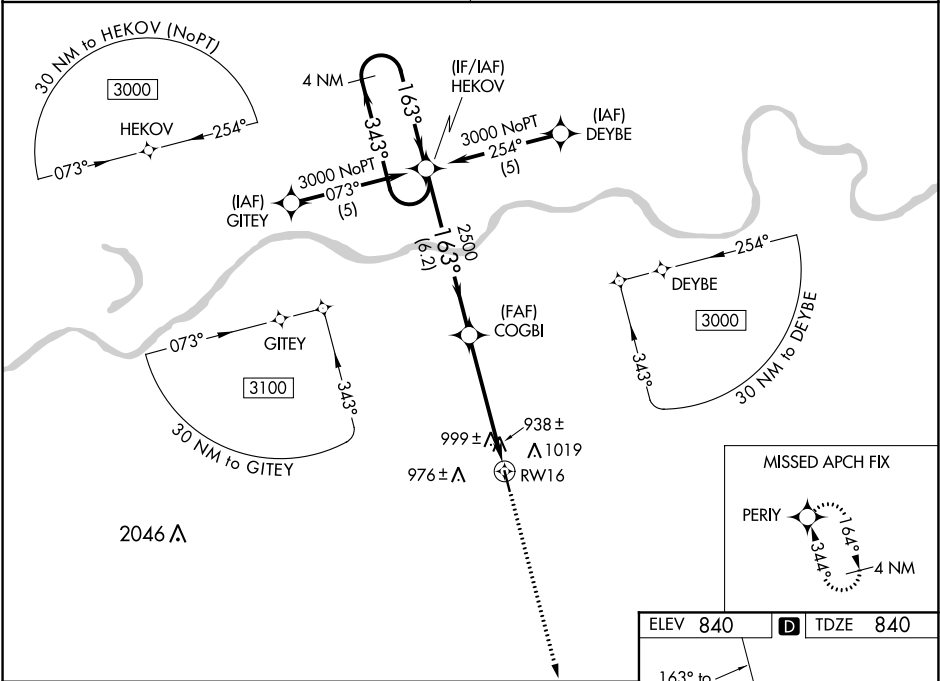


WAAS CH 86601 W16A	APP CRS 163°	Rwy Idg TDZE Apt Elev	4400 840 840
--	------------------------	-----------------------------	---

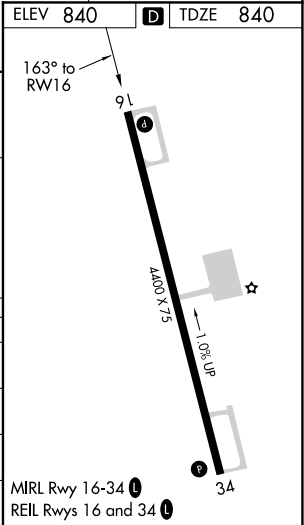
RNAV (GPS) RWY 16
HIGGINSVILLE INDUSTRIAL MUNI (HIG)

NA DME/DME RNP- 0.3 NA. Baro-VNAV NA. Use Whiteman Air Force Base altimeter setting; if not received, use Lee's Summit Muni altimeter setting and increase LPV DA to 1293, LNAV/VNAV to 1410 and all MDAs 60 feet, increase LPV all Cats and Circling Cat C visibility ½ mile.	MISSED APPROACH: Climb to 3000 direct PERIY and hold.
---	---

WHITEMAN APP CON ★ 127.45 284.0	UNICOM 122.8 (CTAF) 0
---	---------------------------------



4 NM Holding Pattern	HEKOV	COGBI	3000	PERIY
3000	343°	163°	163°	
GP 3.00° TCH 31		2500		
	6.2 NM	5 NM		
CATEGORY	A	B	C	D
LPV DA	1247-1½ 407 (500-1½)			
LNAV/VNAV DA	1364-2 524 (600-2)			
LNAV MDA	1360-1 520 (600-1)	1360-1½ 520 (600-1½)	1360-1¾ 520 (600-1¾)	
CIRCLING	1440-1 600 (600-1)	1440-1½ 600 (600-1½)	1440-2 600 (600-2)	



NC-3, 03 DEC 2020 to 31 DEC 2020

NC-3, 03 DEC 2020 to 31 DEC 2020