

WAAS CH 70720 W17A	APP CRS 171°	Rwy Idg 5001 TDZE 348 Apt Elev 352
--	------------------------	---

RNAV (GPS) RWY 17
AUGUSTA STATE (AUG)

AUGUSTA STATE (AUG)

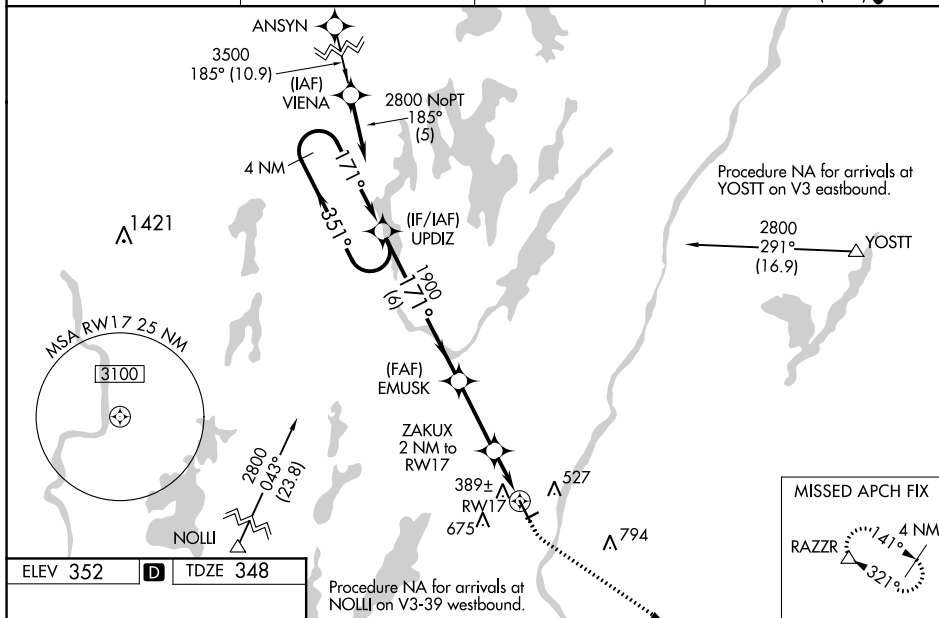
▼ DME/DME RNP-0.3 NA. For inop MALSR, increase LNAV/VNAV all Cats visibility to 1 mile. For inop MALSR when using Waterville altimeter setting, increase LNAV/VNAV all Cats visibility to 1½ mile. VDF and Baro-VNAV NA with Waterville altimeter setting. When local altimeter setting not received, use Waterville altimeter setting; increase LPV DA to 583 feet, LNAV/VNAV DA to 710 feet, and visibility LNAV/VNAV all Cats ½ SM; increase all MDA 40 feet and visibility LNAV Cats C and D ½ SM, and Circling Cat D ½ SM. For uncompensated Baro-VNAV systems, LNAV/VNAV NA below -30°C (-22°F) or above 41°C (105°F). Rwy 8, 26 helicopter visibility below 1 SM NA. Circling Rwy 8 and 26 NA at night. When VGSi inop, Circling Rwy 35 NA at night.

MALSR

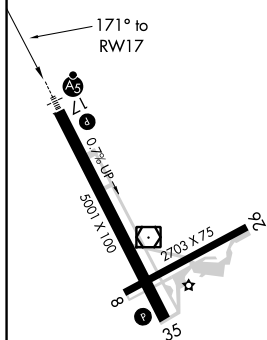


MISSED APPROACH:
Climb to 800 then
climbing left turn to
3000 direct RAZZR
and hold.

ASOS 118.325	PORTLAND APP CON ★ 128.35 299.2	CLNC DEL 119.95 299.2	UNICOM 123.0 (CTAF) 1
------------------------	---	---------------------------------	---------------------------------



ELEV 352	D	TDZE 348
----------	----------	----------



MIRL Rwy 8-26 **L**
HIRL Rwy 17-35 **L**
REIL Rwy 35 **L**

<div><div>4 NM Holding Pattern</div><div>VGSI and RNAV glidepath not coincident (VGSI Angle 3.00/TCH 53).</div><div>EMUSK</div><div>800</div><div>3000</div><div>RAZZR</div><div><div>2800</div><div>←351°</div><div>171°→</div></div><div><div>1900</div><div>171°</div><div>1900</div><div>*1000</div></div><div><div>GP 3.00°</div><div>TCH 60</div></div><div><div>6 NM</div><div>2.8 NM</div><div>1.1 NM</div><div>0.9</div></div><div><div>ZAKUX</div><div>2 NM to RW17</div><div>*0.9 NM to RW17</div><div>*LNAV only.</div></div></div>				
CATEGORY	A	B	C	D
LPV DA	548-½ 200 (200-½)			
LNAV/VNAV DA	675-⅝ 327 (400-⅝)			
LNAV MDA	640-½ 292 (300-½)			
CIRCLING	960-1 608 (700-1)	980-1 628 (700-1)	980-1⅜ 628 (700-1⅜)	1160-2½ 808 (900-2½)

RNAV (GPS) RWY 17