

BANGOR, MAINE

17117

HI-ILS or LOC Z RWY 15

LOC/DME I-JVH 109.5 Chan 32	APCH CRS 150°	Rwy ldg 11,440 TDZE 192 Arpt Elev 192
---	-------------------------	--

JAL-39 [USAF]

BANGOR INTL (KBGR)

- * When ALS inop, increase CAT E RVR to 40.
 ** When ALS inop, increase CAT CDE vis to 1 3/8 miles.
 *** Circling not authorized NE of Rwy 15-33.

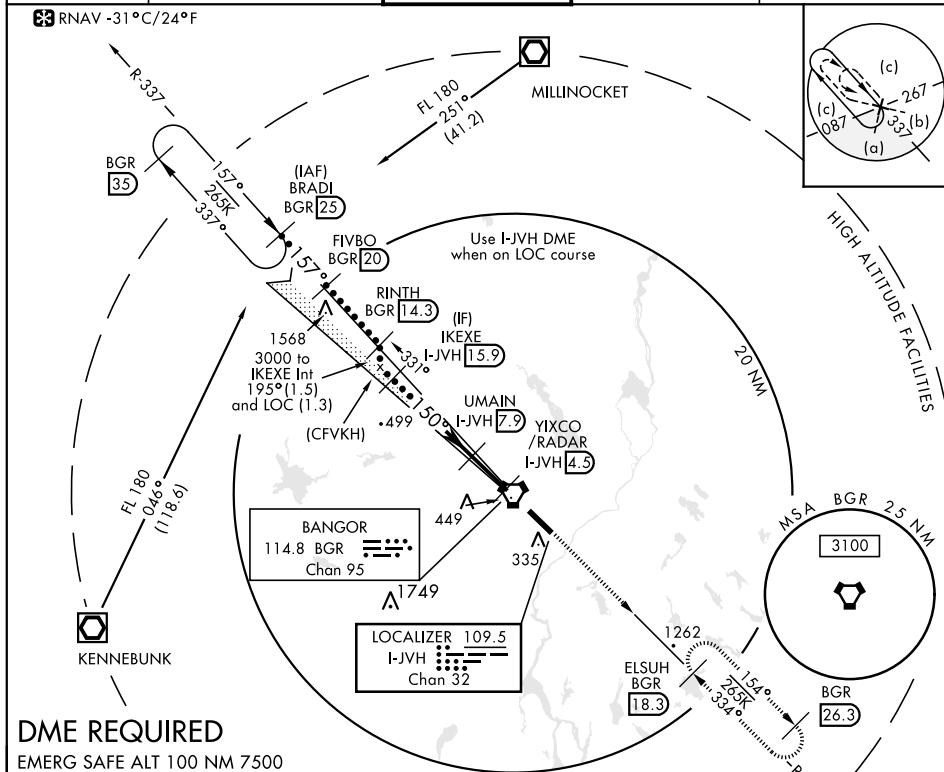
ALSF-2



MISSED APPROACH: Climb to 3000 via heading 150° and BGR VORTAC R-154 to ELSUH (R-154/18.3 DME) and hold.

ATIS 127.75	BANGOR APP CON 118.925 239.3	BANGOR TOWER 120.7 233.7	GND CON 121.9 348.6	ASR
-----------------------	--	------------------------------------	-------------------------------	-----

RNAV -31°C/24°F



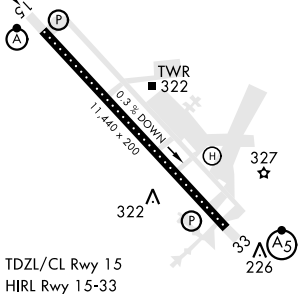
DME REQUIRED

EMERG SAFE ALT 100 NM 7500

CATEGORY	C		D		E	
	392/18		200		(200-1/2)	
S-ILS 15 *	392/18		200		(200-1/2)	
S-LOC 15 **	660/50		468		(500-1)	
*** CIRCLING	740-1 1/2		820-2		880-2 1/2	
	548 (600-1 1/2)		628 (700-2)		688 (700-2 1/2)	

ELEV 192

TDZE 192

150° 5.8 NM
From OM

BANGOR, MAINE

44° 48' N-68° 50' W

BANGOR INTL (KBGR)

Amdt 2 27APR17

HI-ILS or LOC Z RWY 15

NE-1, 03 DEC 2020 to 31 DEC 2020