

BANGOR, MAINE

## HI-VOR/DME or TACAN RWY 15

VORTAC BGR <b>114.8</b> Chan <b>95</b>	APCH CRS <b>157°</b>	Rwy Idg <b>11,440</b> TDZE <b>192</b> Arprt Elev <b>192</b>
--	-------------------------	---

JAL-39 [USAF]

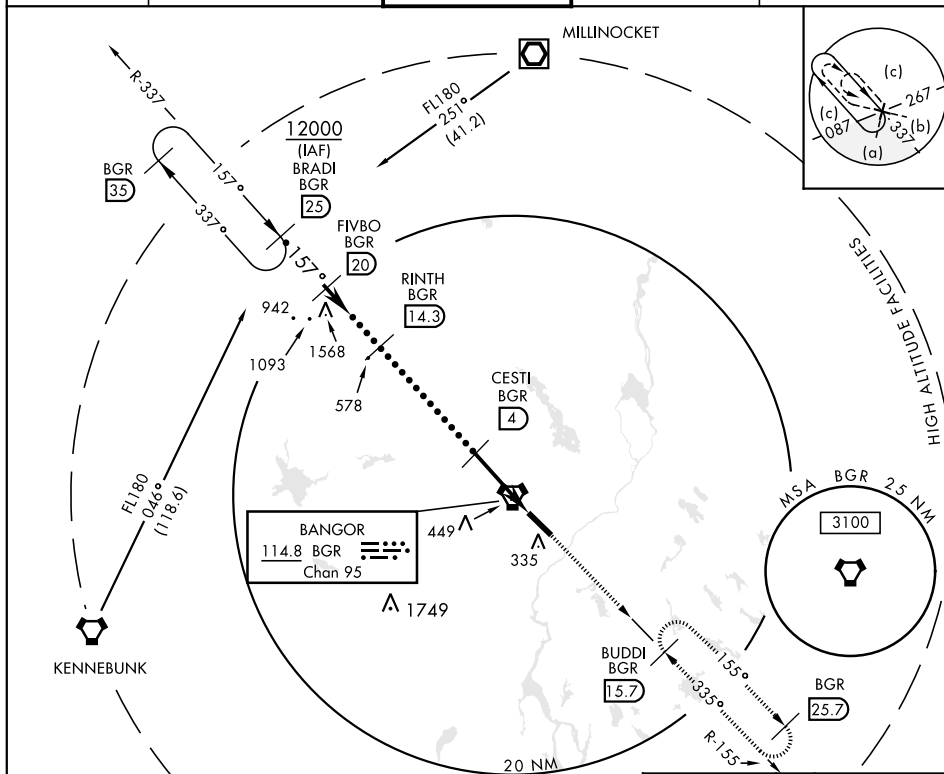
BANGOR INTL (KBGR)

▼ \* When ALS inop, increase CAT E vis to 1 3/4 miles.  
 \*\* Circling not authorized NE of Rwy 15-33.

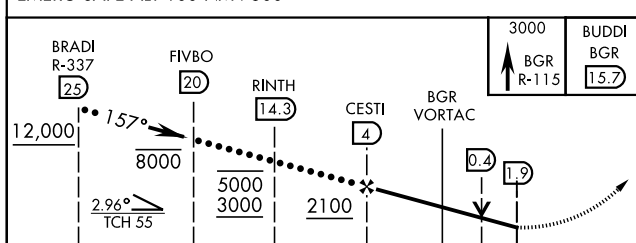


MISSED APPROACH: Climb to 3000 via BGR VORTAC R-155 to BUDDI (R-155/15.7 DME) and hold.

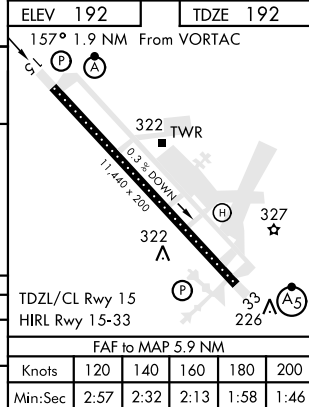
ATIS <b>127.75</b>	BANGOR APP CON <b>118.925 239.3</b>	BANGOR TOWER <b>120.7 233.7</b>	GND CON <b>121.9 348.6</b>	ASR
-----------------------	--	------------------------------------	-------------------------------	-----



EMERG SAFE ALT 100 NM 7500



CATEGORY	C	D	E
S-15 *	720/50 528 (600-1)	720/60 528 (600-1 1/4)	
CIRCLING **	720-1 1/2 528 (600-1 1/2)	760-2 568 (600-2)	



BANGOR, MAINE

44°48'N-68°50'W

BANGOR INTL (KBGR)

Amdt 3 14261

## HI-VOR/DME or TACAN RWY 15

NE-1, 03 DEC 2020 to 31 DEC 2020