

BANGOR, MAINE

AL-39 (FAA)

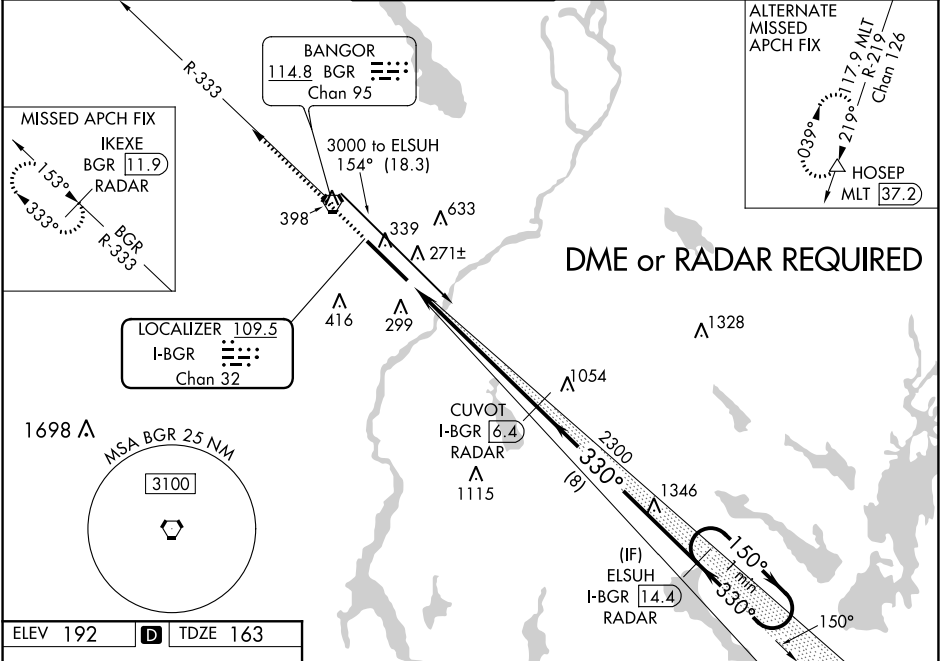
19171

LOC/DME I-BGR	APP CRS	Rwy Idg	11440
109.5	330°	TDZE	163
Chan 32		Apt Elev	192

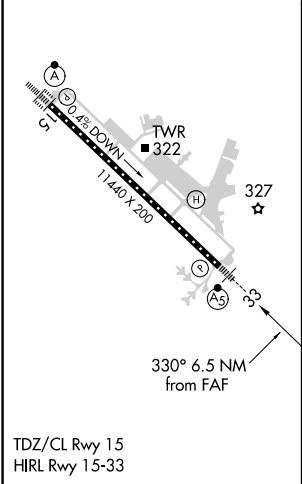
ILS RWY 33 (SA CAT I & II)  
BANGOR INTL (BGR)

▽ ▲ ASR	SA CAT I: Requires specific OPSPEC, MSPEC, or LOA approval and use of HUD to DH. SA CAT II: Reduced lighting: requires specific OPSPEC, MSPEC, or LOA approval and use of Autoland or HUD to touchdown.	MALS R AS	MISSED APPROACH: Climb to 3000 on heading 330° and on BGR VORTAC R-333 to IKEXE/BGR VORTAC 11.9 DME/RADAR and hold.
---------------	--	--------------	---

ATIS 127.75	BANGOR APP CON 118.925 239.3	BANGOR TOWER 120.7 233.7	GND CON 121.9 348.6	CLNC DEL 135.9 348.6
----------------	---------------------------------	-----------------------------	------------------------	-------------------------



ELEV 192	D	TDZE 163
----------	---	----------



CATEGORY	A	B	C	D	E
S-ILS 33	SA CAT I	RA 173/14	150	DA 313	
S-ILS 33	SA CAT II	RA 103/12	100	DA 263	

SA CATEGORY I & II ILS - SPECIAL AIRCREW & AIRCRAFT CERTIFICATION REQUIRED

BANGOR, MAINE  
Amdt 13 27APR17

44°48'N-68°50'W

BANGOR INTL (BGR)  
ILS RWY 33 (SA CAT I & II)

NE-1, 03 DEC 2020 to 31 DEC 2020

NE-1, 03 DEC 2020 to 31 DEC 2020