

BANGOR, MAINE

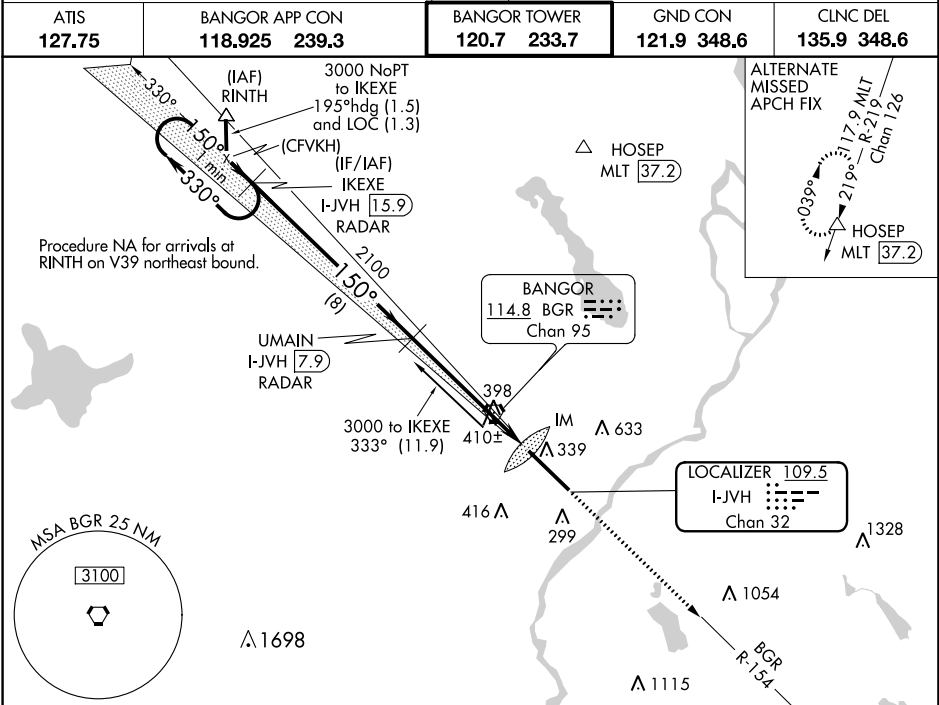
AL-39 (FAA)

19171

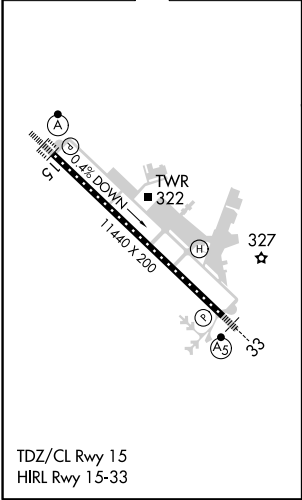
LOC/DME I-JVH	APP CRS	Rwy Idg	11440
109.5	150°	TDZE	192
Chan 32		Apt Elev	192

ILS Y RWY 15 (CAT II & III)
BANGOR INTL (BGR)

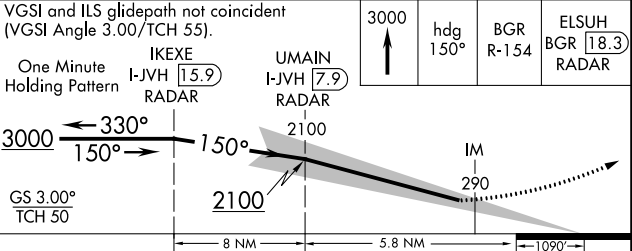
ATIS 127.75	BANGOR APP CON 118.925 239.3	BANGOR TOWER 120.7 233.7	GND CON 121.9 348.6	CLNC DEL 135.9 348.6
----------------	---------------------------------	-----------------------------	------------------------	-------------------------



ELEV 192	D	TDZE 192
----------	---	----------



DME or RADAR REQUIRED



CATEGORY	A	B	C	D
S-ILS 15		CAT II RA 113/12 100 DA 292		
S-ILS 15		CAT III RVR 06		

CATEGORY II & III ILS - SPECIAL AIRCREW & AIRCRAFT CERTIFICATION REQUIRED

BANGOR, MAINE
Amstr 7 27APR17

44°48'N-68°50'W

BANGOR INTL (BGR)
ILS Y RWY 15 (CAT II & III)

NE-1, 03 DEC 2020 to 31 DEC 2020

NE-1, 03 DEC 2020 to 31 DEC 2020